

ANIMAL



August 11-16
2026

America
CELEBRATES
250
1776 - 2026

Early Bird
Entry Fee \$10
Postmarked by
July 10, 2026

Last Day for entries
In-Person & On-line
July 24, 2026

Ohio's BEST



Life is better
when you're
cooler!



Scott Purcell
330-329-8222
Guesserman@Outlook.com

Lemonade

Official Animal Premium 2026

- 129th Year! -

CUYAHOGA COUNTY FAIR and EXPOSITION

Tuesday through Sunday

August 11, 12, 13, 14, 15, 16, 2026

Cuyahoga County Agricultural Society

Mailing Address: P.O. Box 135 • Berea, Ohio 44017

Main Parking Area: 19201 East Bagley Road • Middleburg Hts., Ohio 44130

Gate 1, Off Eastland Road: 164 Eastland Road • Berea, Ohio 44017

(440) 243-0090 • Fax (440) 243-0344 • www.cuyfair.com

TABLE OF CONTENTS

Admission Fees	4
Camping & Parking	4
Cattle, Beef and Dairy	6-8
Canine	8-9
Dairy Goats	10
Meat Goats	10
Directors-At-Large & Officers	3
Entry Requirements – Exhibitors	4
Flea Market	22
General Rules	4
Horses, Draft	11-12
Horse Show	14
Livestock Health Exhibition Rules	5-6
Ohio Fair Schedule	2
Open Hay and Grain	9
Payment of Premiums & Awards	4
Ponies, Draft	12-13
Poultry	14-17
Rabbits and Cavies	17-21
Sheep	21-22
Swine	22-23

2026 Ohio Agricultural Fair Schedule

Information on All Ohio Events – 1-800-282-5393



COUNTY FAIR & LOCATION..... DATES

WEEK OF MAY 31

Paulding County Fair (Paulding)* June 6-June 13

WEEK OF JUNE 14

Pickaway County Fair (Circleville)* June 20-June 27

WEEK OF JUNE 21

Harrison County Fair (Cadiz) June 22-June 27
Putnam County Fair (Ottawa)* June 22-June 27
Hamilton County Fair (Carthage) June 25-June 28

WEEK OF JUNE 28

Marion County Fair (Marion)* June 28-July 4

WEEK OF JULY 5

Clinton County Fair (Wilmington)* July 11-July 18
Madison County Fair (London) July 11-July 18

WEEK OF JULY 12

Adams County Fair (West Union) July 12-July 18
Logan County Fair (Bellefontaine) July 12-July 18
Lawrence County Fair (Proctorville) July 13-July 18
Lucas County Fair (Maumee) July 13-July 19
Montgomery County Fair (Dayton)* July 14-July 19
Trumbull County Fair (Cortland)* July 14-July 19
Jackson County Fair (Wellston)* July 17-July 25

WEEK OF JULY 19

Ottawa County Fair (Oak Harbor)* July 19-July 26
Crawford County Fair (Bucyrus)* July 20-July 25
Fayette County Fair (Washington C.H.)* July 20-July 25
Perry County Fair (New Lexington) July 20-July 25
Warren County Fair (Lebanon)* July 20-July 25
Franklin County Fair (Hilliard)* July 20-July 26
Carroll County Fair (Carrollton)* July 21-July 26
Clark County Fair (Springfield) July 24-July 31
Pike County Fair (Piketon)* July 24-August 1
Knox County Fair (Mt. Vernon)* July 25-August 1

WEEK OF JULY 26

Butler County Fair (Hamilton) July 26-August 1
Shelby County Fair (Sidney)* July 26-August 1
Union County Fair (Marysville)* July 26-August 1
Seneca County Fair (Tiffin)* July 26-August 2
Clermont County Fair (Owensville) July 27-August 1
Vinton County Fair (McArthur) July 27-August 1
Lake County Fair (Painesville)* July 28-August 2
Summit County Fair (Tallmadge)* July 28-August 2
Ohio State Fair (Columbus)* July 29-August 9
Preble County Fair (Eaton)* August 1-August 8

WEEK OF AUGUST 2

Auglaize County Fair (Wapakoneta)* August 2-August 8
Greene County Fair (Xenia)* August 2-August 8
Wood County Fair (Bowling Green)* August 2-August 9
Gallia County Fair (Gallipolis) August 3-August 8
Scioto County Fair (Lucasville) August 3-August 8
Columbiana County Fair (Lisbon)* August 3-August 9
Medina County Fair (Medina) August 3-August 9
Champaign County Fair (Urbana)* August 7-August 14
Athens County Fair (Athens)* August 7-August 15

WEEK OF AUGUST 9

Hartford Independent Fair (Licking Co.)* August 9-August 15
Richland County Fair* August 9-August 15
Ross County Fair (Chillicothe)* August 9-August 15
Holmes County Fair (Millersburg) August 10-August 15
Erie County Fair (Sandusky) August 10-August 15
Ashtabula County Fair (Jefferson)* August 11-August 16
Cuyahoga County Fair (Berea) * August 11-August 16
Mercer County Fair (Celina)* August 13-August 19
Henry County Fair (Napoleon)* August 13-August 20
Miami County Fair (Troy)* August 14-August 20

WEEK OF AUGUST 16

Huron County Fair (Norwalk) August 16-August 22
Muskingum County Fair (Zanesville)* August 16-August 22
Meigs County Fair (Pomeroy)* August 17-August 22
Jefferson County Fair (Smithfield) August 17-August 23
Allen County Fair (Lima)* August 21-August 29
Darke County Fair (Greenville)* August 21-August 29
Defiance County Fair (Hicksville)* August 22-August 29

WEEK OF AUGUST 23

Lorain County Fair (Wellington)* August 23-August 30
Monroe County Fair (Woodsfield)* August 24-August 29
Sandusky County Fair (Fremont) August 24-August 30
Portage County Fair (Randolph) August 25-August 30

WEEK OF AUGUST 30

Noble County Fair (Caldwell)* August 31-Sept. 5
Morrow County Fair (Mt. Gilead)* August 31-Sept. 7
Hancock County Fair (Findlay)* Sept. 1-Sept. 7
Richwood Independent Fair (Union Co.)* Sept. 1-Sept. 7
Stark County Fair (Canton)* Sept. 1-Sept. 7
Van Wert County Fair (Van Wert)* Sept. 1-Sept. 7
Mahoning County Fair (Canfield)* Sept. 2-Sept. 7
Geauga County Fair (Burton)* Sept. 3-Sept. 7
Fulton County Fair (Wauseon)* Sept. 4-Sept. 10
Washington County Fair (Marietta)* Sept. 5-Sept. 8

WEEK OF SEPTEMBER 6

Highland County Fair (Hillsboro) Sept. 6-Sept. 12
Belmont County Fair (St. Clairsville) Sept. 7-Sept. 13
Morgan County Fair (McConnelsville)* Sept. 8-Sept. 12
Hardin County Fair (Kenton)* Sept. 8-Sept. 13
Wayne County Fair (Wooster)* Sept. 12-Sept. 17
Williams County Fair (Montpelier)* Sept. 12-Sept. 19

WEEK OF SEPTEMBER 13

Guernsey County Fair (Old Washington)* Sept. 14-Sept. 19
Hocking County Fair (Logan) Sept. 14-Sept. 19
Wyandot County Fair (Upper Sandusky)* Sept. 14-Sept. 19
Bellville Independent Fair (Richland Co.) Sept. 16-Sept. 19
Delaware County Fair (Delaware)* Sept. 19-Sept. 26

WEEK OF SEPTEMBER 20

Ashland County Fair (Ashland)* Sept. 20-Sept. 26
Tuscarawas County Fair (Dover)* Sept. 21-Sept. 27
Albany Independent Fair (Athens Co.) Sept. 23-Sept. 27

WEEK OF SEPTEMBER 27

Brown County Fair (Georgetown) Sept. 28-October 3
Barlow Independent Fair (Washington Co.) Sept. 30-October 4
Coshocton County Fair (Coshocton)* October 2-October 8

WEEK OF OCTOBER 4

Loudonville Independent Fair (Ashland Co.) October 6-October 10
Fairfield County Fair (Lancaster)* October 11-October 17

* = Harness Racing

The Cuyahoga County Agricultural Society

OFFICERS

Carl Cooley.....President
 Larry Theurer..... Vice President
 Joanne ScudderSecretary
 Gail Royak-WindTreasurer

EXECUTIVE COMMITTEE

Carl Cooley, Chairman
 Larry Theurer, Gail Royak-Wind, Bob Sculac,
 Joanne Scudder, Jim Shea, Tim Fowler

DIRECTORS-AT-LARGE

TERM EXPIRES 2026

Dennis Eck, Strongsville
 Tim Fowler, North Royalton
 Joanne Scudder, Brecksville
 Larry Theurer, Cleveland

DIRECTORS-AT-LARGE

TERM EXPIRES 2027

Diane Barton, Parma
 Carl Cooley, North Olmsted
 Jeff Collins, Bay Village
 Gail Royak-Wind, Brook Park
 Tom Sabrey, Strongsville

DIRECTORS-AT-LARGE

TERM EXPIRES 2028

Holly Everhart, Berea
 Jordyn Dickson, Bedford
 James Lewandowski, Parma
 Bob Sculac, Olmsted Falls
 James Shea Jr., Berea

EX-OFFICIO DIRECTORS

Cuyahoga County Extension Agents
 Cuyahoga County Executive

HONORARY DIRECTORS

Janet L. Schubert
 Joyce Kish
 Dennis Kopy
 Stanley Trupo

DEPARTMENT AND DIRECTOR-AT-LARGE

Administration...Joanne Scudder
 AdmissionsJoanne Scudder
 Apiary..... Dennis Eck
 Arts & Crafts... Jim Lewandowski
 Beer & Wine Sales... Dennis Eck
 Bob Sculac
 Buildings, Grounds,
 Horse Barn Rentals... Bob Sculac
 Campgrounds..... Bob Sculac
 Canine Holly Everhart
 Cattle Carl Cooley
 Contract Work/Capital Projects
 Jim Shea
 Domestic Arts &
 Hobbies Jim Lewandowski
 Draft Horses..... Dennis Eck
 Draft Ponies Dennis Eck
 Entertainment ... Jordyn Dickson
 Fair Vendors &
 Amusements Diane Barton
 Fair Veterinarian..... Carl Cooley
 Fire Tim Fowler
 Flea Market..... Jim Shea
 FloralJeff Collins
 Garden Produce.....Jeff Collins
 GoatsJeff Collins
 Harness Racing, Horse Show
Gail Wind
 Home & Hobby..Jim Lewandowski
 Horse Barns Dennis Eck
 Junior Fair Holly Everhart
 Legal..... Carl Cooley
 Maintenance Larry Theurer

Media-Advertising. Jordyn Dickson
 Parking..... Larry Theurer
 Poultry.....Tom Sabrey
 Premium Book...Joanne Scudder
 Rabbits & CaviesTom Sabrey
 Security Carl Cooley
 Sheep.....Tom Sabrey
 Sponsorship Holly Everhart
 Sustainability/
 Energy Ctr.Joanne Scudder
 SwineTom Sabrey

COMMITTEES & CHAIR

Ambassador
 Contest Diane Barton
 Audit..... Bob Sculac
 Budget..... Carl Cooley
 Human Resources..Joanne Scudder
 Livestock Carl Cooley
 Scholarship..... Diane Barton
 Safety..... Tim Fowler

STAFF

Accounting Asst.... Susan Bachie
 Flea Market
 Manager Jim Lewandowski
 Administrative
 Clerk..... Jackie Kinder
 Grounds
 Superintendent Barry Pettit

SUPPORT

4H Animal Auction
Bruce Kucharsl
 Legal Consul Greg Sponseller
 OSU Extension
 Educator 4H Robin Stone

**Our premium book has two sections;
 General and Animal.
 If you need the entries section,
 please stop in or call the office at
 (440) 243-0090**

Unaccompanied Minor Protocol - Page 35

ADMISSION AND PARKING FREE PARKING EVERY DAY!

(Exhibit animals will be released starting at 5 PM on Sunday)
Commercial Buildings close at 10 PM DAILY

DAILY ADMISSION - Admission tickets and passes **DO NOT** include ride privileges. Ride Wrist Bands will be available at the Prime Time ticket booths inside the fairgrounds.

FREE GATE ADMISSION ANY DAY

CHILDREN age 2 and under
ACTIVE MILITARY with Valid ID

EARLY PRESALE (ANY DAY GATE ADMISSION)

June 1st - June 30th, 2026
ONLINE: \$8.00 / IN-PERSON: Not Available

PRESALE (ANY DATE GATE ADMISSION)

July 1st - July 31st, 2026
ONLINE: \$9.00 / IN-PERSON: Not Available

TUESDAY 8/11/26 DISCOUNT DAY

ONLINE: \$10.00 / IN-PERSON: Veterans & First Responders (with ID) - \$5.00 / Seniors (age 60+) - \$5.00 / Kids (age 12 & under) - \$5.00 / General Admission - \$12.00

TUE - THUR GATE ADMISSION

ONLINE: \$10.00 / IN-PERSON: \$12.00

FRI - SUN GATE ADMISSION

ONLINE: \$12.00 / IN-PERSON: \$14.00

DEMO DERBY

GENERAL ADMISSION: \$15.00 / PREFERRED SEATING: \$25.00

COMMERCIAL BUILDINGS CLOSE AT 10 PM NIGHTLY

CAMPING

Fair Week Only - By Reservations Only

Camper/Motorhome Parking, Electric Only \$195
Camper/Motorhome Parking, Water & Electric \$225
Camper/Motorhome Parking, Water, Electric & Sewer \$300

EXHIBITORS ENTRY REQUIREMENTS

Privately owned golf carts/gators must be registered with CCF office, must provide proof of insurance, drivers must have valid drivers license, and must display proof of registration on vehicle.

- EXHIBITOR'S TICKET**– All exhibitors in Open Classes receive 2 Exhibitor's tickets with their entry fee. The cost depends on entry date. All entries received postmarked by July 12 - \$10.00. All entries postmarked between July 13 and the close of entries on July 24 - \$15.00. Only one exhibitor allowed per entry ticket and the ticket includes two Fair General Admissions. See Entry Forms for details. Note: The purchase of an Exhibitor Ticket does not constitute a membership in the Cuyahoga County Agricultural Society and further does not entitle the Purchaser to vote at the Annual Election of Membership Meetings.
- ENTRY FEES** – No added entry fees required in the Arts & Crafts, Garden Produce or Floral Departments. See the Livestock & Horse Show Premium Lists covering entry fees for all animals exhibited.
- PHYSICAL & ONLINE ENTRY FORMS** in all departments **MUST** be delivered to the Fair Office or postmarked no later than July 24, 2026 except in certain Breeds of Cattle.
- Directors-At-Large, Superintendents and their assistants are not permitted to exhibit in their respective departments. Fairboard office personnel are not permitted to exhibit in any department.
- The Judge may require proof, if deemed necessary, as to any doubtful or disputed point.
- All exhibitor's articles and animals must remain on exhibit, no substitutions, until closing time each day, except on Sunday, the last day of the Fair. On Sunday evening livestock will be released at the discretion of the Board of Directors-At-Large.

- Directors-At-Large and/or Superintendents of the respective departments are in charge of assigning space and/or stalls to Exhibitors.
- No person shall be informed of the number or kinds of entries, except the Directors-At-Large.
- SUBMIT YOUR ENTRIES on time. Class descriptions should be copied exactly as they appear in the premium book.** You have 3 days to make any additions or deletions to your entry once it is received. After 3 days, no changes will be accepted. **Due to time constraints, entries made the last week of the entry period are final and cannot be changed.**
- The Fairboard reserves the right to interpret its own rules and regulations and determine through its Directors-At-Large all matters and differences in regards thereto. A grieved party may enter a protest, signed by three persons, with the Secretary, who shall lay the same before the Board for their decision at the next session, from which there shall be no appeal.
- Make checks payable to **CUYAHOGA COUNTY FAIR**. Your check, money order, or **charge card information** must accompany your entry form. Mail your entry form and check to:
Cuyahoga County Fair • P.O. Box 135 • Berea, Ohio 44017

MODIFIED JULY FAIR OFFICE HOURS

JULY 6-17, 2026: MON THRU FRIDAY - 10AM TO 3PM
JULY 20 -31, 2026: MON THRU FRI - 9AM TO 5PM
CLOSED JULY 3, 2026. CLOSED ALL WEEKENDS IN JULY.

AUGUST 2026 FAIR OFFICE HOURS

MON	TUES	WED	THU	FRI	SAT	SUN
					1	2
3 Office Hours 9A - 5P	4 Office Hours 9A - 5P	5 Office Hours 9A - 5P	6 Office Hours 10A - P	7 Office Hours 9A - 5P	8 Office Hours 9A - 5P	9 Office Hours 9A - 5P
10 Office Hours 9A - 5P	11 FAIR HOURS 12 - 11P Office Hours 9A - 10P	12 FAIR HOURS 12 - 11P Office Hours 9A - 10P	13 FAIR HOURS 12 - 11P Office Hours 9A - 10P	14 FAIR HOURS 12 - 11P Office Hours 9A - 10P	15 FAIR HOURS 10A - 11P Office Hours 9A - 10P	16 FAIR HOURS 12 - 10P Office Hours 9A - 10P
17 FAIR CLOSED Office Hours 9A - 5P	18 OFFICE CLOSED	19 Office Hours 10A - 7P	20 OFFICE CLOSED	21 Office Hours 10A - 3P	22 OFFICE CLOSED	23 OFFICE CLOSED

- FAIR OFFICE HOURS:**
YEAR ROUND M,W,F - 10AM TO 3PM - CLOSED WEEKENDS
- Any/all Exhibitor(s) who wins over \$599.00 total premiums must complete a W-9 form before checks are distributed in compliance with the IRS regulations. A 1099 will be issued to those exhibitors.
- For rules and regulations not included in the above, Rules and Regulations of the Ohio Department of Agriculture shall apply.

PAYMENT OF PREMIUMS and AWARDS

If the proceeds of the Fair, after paying expenses, are not sufficient to pay the Premiums in full, they will be paid on a prorated basis from the funds available.

No premiums will be paid on articles unless they are listed in the Premium List. Other articles may be exhibited, and if deemed worthy by the Board, may be placed on the Premium List the following year.

No person is to interfere with the judges during their examination of stock or other articles. Any Exhibitor interfering shall forfeit his or her premium. Where there is but one animal or article in a class, the Judge may award first, second, or no premium, if he or she deems it undeserving. **Entry tags or ribbons have no value as to the payment of premiums, as premiums are paid only by the records of the Judges' books from which there shall be no appeal.**

2026 SEASON OHIO'S LIVESTOCK HEALTH EXHIBITION RULES

FOR THE MOST CURRENT RULES AND UPDATES,
REFER TO THE OHIO DEPARTMENT OF
AGRICULTURE WEBSITE

901:18-01 Chapter's application

- (A) Animals when moved within or imported into Ohio solely for exhibition purposes shall comply with the requirements of this chapter.
- (B) Animals described in paragraph (A) of this rule who are in compliance with the rules of this chapter are exempt from the other rules governing movement within or importation into Ohio except for the rules governing movement and importation of quarantined animals.
- (C) Animals imported into Ohio for any purpose in addition to exhibition purposes shall meet all movement and import requirements of Chapter 901:17 of the Administrative Code

901:18-02 Definitions.

As used in this chapter:

- (A) "Approved veterinarian" means any licensed and accredited veterinarian approved by the Ohio department of agriculture, or an employee of the Ohio department of agriculture or the United States department of agriculture, animal plant health inspection service, veterinary services.
- (B) "Certificate of veterinary inspection" means a form from the state of origin which has been issued and completed by a licensed and accredited veterinarian attesting to the health status and identification of an animal listed thereon.
- (C) "Contagious or infectious disease" means any disease, including any foreign animal disease, or vector, capable of transmission by any means from a carrier animal to a human or to another animal and includes dangerously contagious or infectious diseases.
- (D) "Department" means the Ohio department of agriculture or its designee.
- (E) "Exhibition" means any public show of animals which is sponsored by or under the control of an Ohio county or independent agricultural society organized under Chapter 1711. of the Revised Code; or the Ohio state fair, or which is assembled for a period which exceeds thirty-six hours or contains animals of origins other than Ohio.
- (F) "Licensed and accredited veterinarian" means a person who is licensed to practice veterinary medicine either by the state of Ohio or the state in which the certificate of veterinary inspection was issued and who is approved by the United States department of agriculture, animal plant health inspection service, veterinary services, to be an accredited veterinarian.
- (G) "Residue" means any poisonous or deleterious pesticide governed by 40 C.F.R. 180(2017), any poisonous or deleterious substance governed by 21 C.F.R. 109.6(2017), or any other substance governed by 21 C.F.R. 556(2017).

901:18-03 Exhibitions: sanitation, inspection and records

- (A) Each entity sponsoring an exhibition shall have in attendance an approved veterinarian for the duration of the exhibition.
- (B) Each entity sponsoring an exhibition shall:
 - (1) Under the direction of the approved veterinarian, thoroughly clean and disinfect each building, pen, stall, ring, or other enclosure in which animals are to be quartered for exhibition immediately prior to the exhibition;
 - (2) Have the approved veterinarian:
 - (a) Examine the certificate of veterinary inspection when required for an animal brought to the exhibition;
 - (b) Inspect within a reasonable time of arrival each animal brought to the exhibit for symptoms of any infectious or contagious diseases; and
 - (c) Inspect each animal daily that is present at the exhibition for symptoms of infectious or contagious disease.
 - (3) Maintain a record for one year from the date of the exhibition of each animal present at the exhibition. The record shall contain the name and address of the owner of each animal and the species and breed of the animal.
 - (4) Order the immediate removal of any animal which, in the opinion of the approved veterinarian, places other animals at unacceptable risk of disease.
- (C) The department may grant an exemption from paragraph (B)(1) of this rule upon request and for good reason.

901:18-04 Exhibitors

- (A) No person shall present for exhibition or exhibit an animal which he knows or has reason to suspect is infected with or has been exposed to a contagious or infectious disease or residue.
- (B) The owner or bailee of an animal with symptoms of an infectious or contagious disease shall immediately remove the animal from the exhibition premises when directed by an exhibition official, the approved veterinarian, or the department.
- (C) Each person who presents an animal for exhibition or exhibits an animal shall present any certificate of veterinary inspection, registration certificates, vaccination certificate, and other documents to exhibition officials, the approved veterinarian, or the department upon request.
- (D) Each person who presents an animal for exhibition or exhibits an animal for which a certificate of veterinary inspection is required by the rules of this Chapter shall forward a copy of the certificate of veterinary inspection to the department.
- (E) Failure to comply with the rules of this chapter may result in the department taking action pursuant to section 941.10 of the Revised Code or issuing a quarantine order until such time that the violation has been remedied.

901:18-05 Poultry and fowl

- (A) All turkeys, chickens and gamebirds moved within or imported into Ohio for exhibition must either:
 - (1) Originate directly from a flock or hatchery which is a participant in the national poultry improvement plan for the eradication of disease and be accompanied by documentary evidence that they meet the requirement of this paragraph;
 - (2) Originate directly from a flock which has had a negative test for pullorum/fowl typhoid disease within twelve months preceding the opening date of exhibition and be accompanied by documentary evidence that they meet the requirement of this paragraph;
- (3) Have had a negative test for pullorum/fowl typhoid disease, within ninety days, preceding the opening date of the exhibition and be accompanied by documentary evidence that they meet the requirement of this paragraph; or
- (4) Be tested for pullorum/fowl typhoid disease upon arrival at the exhibition by a tester approved by the Ohio department of agriculture and found negative.
- (B) The rapid whole blood test shall not be used to test turkeys for compliance with the requirements of paragraphs (A)(2), (A)(3) and (A)(4) of this rule.
- (C) Waterfowl, doves and pigeons are exempt from this rule.

901:18-06 Cattle

- (A) Cattle moved within Ohio for exhibition must show no symptoms or evidence of an infectious or contagious disease.
- (B) All cattle imported into Ohio for exhibition must comply with rule 901:17-03 of the Administrative Code.
 - (1) Be accompanied by a certificate of veterinary inspection issued within thirty days prior to entry and be identified with official individual identification; and
 - (2) Meet the following tuberculosis requirements:
 - (a) Originate from an accredited free state or zone; or
 - (b) Originate from a modified accredited advanced state or zone and meet the following:
 - (i) Originate from an accredited herd; or
 - (ii) Have an individual negative tuberculosis test within sixty days prior to entry; or
 - (c) Originate from a modified accredited state or zone and meet the following:
 - (i) Originate from an accredited herd; or
 - (ii) Originate from a herd that has completed a whole herd negative tuberculosis test within twelve months prior to entry; and
 - (iii) Have an individual negative tuberculosis test within sixty days prior to entry; and
 - (iv) Obtain a permit.
 - (d) Originate from an accreditation preparatory state or zone and meet the following:
 - (i) Originate from an accredited herd; and
 - (ii) Have an individual negative tuberculosis test within sixty days prior to entry; and
 - (iii) Obtain a permit.
 - (e) Cattle or bison imported into Ohio for breeding purposes which originate from a non-accredited state or zone can only enter Ohio for slaughter in compliance with rule 901:17-10 of the Administrative Code.
 - (f) All tuberculosis tests must be conducted by a licensed and accredited veterinarian.

901:18-07 Goats

- (A) Goats moved within Ohio for exhibition:
 - (1) The animal presented for exhibition must show no symptoms or evidence of an infectious or contagious disease.
 - (2) All sexually intact animals and any wether eighteen months of age and older must be identified with an official identification as defined in rule 901:13-04 of the Administrative Code.
- (B) Goats imported into Ohio for exhibition must comply with rule 901:17-06 of the Administrative Code.
 - (1) Must be accompanied by a certificate of veterinary inspection issued within thirty days preceding the opening date of the exhibition and be identified with official individual identification; and
 - (2) The animal presented for exhibition must show no symptoms or evidence of an infectious or contagious disease; and
 - (3) The owner and the veterinarian must attest to the following statement written on the certificate of veterinary inspection "the goats in this shipment are not known to be under any movement restrictions because of scrapie."
 - (4) Originate from a tuberculosis accredited free herd as defined in paragraph (G) of rule 901:18-02 of the Administrative Code for bovine tuberculosis eradication; or
 - (5) Originate from a bovine accredited free state or zone, or a bovine modified accredited advanced state or zone; or
 - (6) Originate from a bovine modified accredited state or zone must comply with rule 901:17-06 of the Administrative Code.
- (C) If originate from a bovine accreditation preparatory or a bovine non-accredited state or zone are prohibited from exhibition.

901:18-08 Horses, mules asses, and ponies

- (A) Horses, mules, asses, and ponies moved within Ohio for exhibition must show no symptoms or evidence of an infectious or contagious disease. If the animal is twelve months of age or older, the exhibition may require that the animal has been tested and classed negative to an official test for equine infectious anemia within twelve months of the opening date of the exhibition.
- (B) Horses, mules, asses, and ponies imported into Ohio for exhibition shall comply with rule 901:17-07 of the Administrative Code.
 - (1) Be accompanied by a certificate of veterinary inspection issued at the point of origin immediately prior to entering Ohio, certifying that they have been given a careful, clinical inspection and been found to be free of symptoms of any dangerously infectious or contagious or communicable disease or known exposure thereto. Rectal temperature at the time of examination must be recorded on the certificate of veterinary inspection, and
 - (2) If twelve months of age or older, be accompanied by evidence that the identified animal was negative to an official test for the disease equine infectious anemia conducted at a state or federally approved laboratory. This test must have been conducted within the twelve month period preceding the date of importation.
 - (3) Owners of equine may substitute an owner/shipper statement in place of the certificate of veterinary inspection, if the equine are consigned to a livestock market licensed under Chapter 943. of the Revised Code with an approved veterinary inspector present. All equine meeting this requirement shall be exempt from paragraph (A) of this rule.

901:18-09 Sheep

- (A) Sheep moved within Ohio for exhibition:
 - (1) The animal presented for exhibition must show no symptoms or evidence of an infectious or contagious disease.
 - (2) All sexually intact animals and any wether eighteen months of age and older must be identified with an official identification as defined in rule 901:13-04 of the Administrative Code.
- (B) Sheep imported into Ohio for exhibition must comply with rule 901:17-08 of the Administrative Code.
 - (1) Must be accompanied by a certificate of veterinary inspection issued within thirty days preceding the exhibition opening date of the exhibition and be identified with official individual identification; and
 - (2) The animal presented for exhibition must show no symptoms or evidence of an infectious or contagious disease; and
 - (3) The owner and the veterinarian must attest to the following statement written on the certificate of veterinary inspection "the sheep in this shipment are not known to be under any movement restrictions because of scrapie."

901:18-10 Swine

- (A) Swine moved within Ohio for exhibition must show no symptoms or evidence of an infectious or contagious disease.
- (B) Swine imported into Ohio for exhibition:
 - (1) Must be accompanied by a certificate of veterinary inspection issued within thirty days preceding the opening date of the exhibition; and
 - (a) Originate immediately and directly from a pseudorabies stage V area or an area or country recognized by the United States department of agriculture, animal plant health inspection service, veterinary services as pseudorabies free; or
 - (b) Originate immediately and directly from a pseudorabies stage IV area; and
 - (c) Be negative to an official pseudorabies test within thirty days of the exhibition.

LIVESTOCK HEALTH EXHIBIT RULES (continued)

901:18-11 Camelids.

- (A) Camelids including, but not limited to, llamas, alpacas and vicuñas moved within Ohio for exhibition when presented for exhibition must show no symptoms or evidence of an infectious or contagious disease.
- (B) Camelids including, but not limited to, llamas, alpacas and vicuñas imported into Ohio for exhibition must comply with rule 901:17-15 of the Administrative Code:
- (1) Be accompanied by a certificate of veterinary inspection issued within thirty days prior to entry and
 - (2) Be identified with official individual identification, which is defined as the following:
 - (a) An ear tattoo which has been registered with a breed association;
 - (b) An official ear tag bearing the US shield which includes either of the following:
 - (i) An animal identification number (AIN);
 - (ii) A national uniform ear tag system (NUES) number.
 - (c) A microchip placed at the base of the animal's ear.
 - (3) Show no symptoms or evidence of infectious or contagious diseases.

CATTLE DEPARTMENT 10

CARL COOLEY
Director-At-Large for Cattle
Contact Info: coolwood15@gmail.com

CATTLE ENTRY RULES

See Exhibitor Rules for entry deadline or until all stall space is filled.

1. To exhibit, you must purchase an exhibitor ticket which includes 2 complimentary gate admissions. The exhibitor ticket allows entry in all open class Divisions.
2. The entry fee is 10% of the first place premium offered in each particular class. The entry fees are non-refundable and non-transferrable.
3. A bring-in fee of \$30.00 per head is paid to each exhibitor.
4. Eligibility To Exhibit:
 - A. Competition is open to all.
 - B. The exhibitor must be the owner of the animals he or she exhibits.
 - C. Any animal over 6 months old and shown as a single entry in any class (exception is a cow-calf or group class) must be registered with the breed association. The registration papers may be required as proof of registration.
 - D. Each animal must comply with the Inspection and Health Requirements of Livestock Exhibited in Ohio as per the Ohio Department of Agriculture, printed in this book
5. Animals must be in their stalls by 12:00 Noon on Tuesday, and may be received on Monday. No animal may be removed from the Fair before 6:00 p.m. Sunday, the last day of the Fair. Failure to remain the complete week will result in the forfeiture of one-half the bring-in fee. Special arrangements may be made by the Fairboard Director-At-Large in Charge or the Superintendent, to bring in or remove cattle on a different schedule than above.
6. All animals must be in their stalls before 11:00 a.m. each day. All stalls and aisles MUST be cleaned before 11:00 a.m. each day and kept clean throughout the day
7. The entry requirements of the Cuyahoga County Fair and the Cow Palace must be adhered to and followed.
8. No loud noise, especially radios, is allowed.
9. Tampering and misrepresentation or any other irregularity in exhibiting or showing will be considered fraud and deception. Any exhibitor whose animal gives evidence of fraud and deception will be barred from

competition.

10. The Director-At-Large in charge reserves the right to have any animal removed from the barn or show ring if the animal is unruly or unmanageable.
11. The Director-At-Large in charge reserves the right to interpret all rules and regulations governing the show and to make such decisions as necessary for the successful conduct of the show. Such interpretations and decisions will be final.
12. Any rules not covered in this book will revert to the rules covered in the Ohio State Premium Book.
13. The decision of the judges is final.
14. All livestock must be removed by 11:00 p.m. on final day of the Fair.
15. **See Exhibitor Entry Requirements on page 4**

DOGS ARE NOT PERMITTED ON THE FAIRGROUNDS UNLESS THEY ARE SERVICE DOGS. LEASHES ARE MANDATORY.

WE REQUEST THAT ALL SERVICE DOGS WEAR A VEST WHILE ON THE FAIRGROUNDS AND OWNERS KEEP A COPY OF THEIR REGISTRY ON THEIR PERSON.

BEEF BREEDING CATTLE DEPARTMENT 10-A

Beef Cross Breeds	Section 1
Herefords	Section 2
Maine Anjou	Section 3
Simmental	Section 4
Chianina	Section 5
Limousin	Section 6
Angus	Section 7
Other Unlisted Breeds	Section 8

OPEN CLASS BEEF CATTLE SHOW WEDNESDAY 5:00 p.m.

BEEF CATTLE PREMIUMS

Classes 1 thru 8, 10 thru 18	\$20	\$15	\$12	\$10
Classes 9, 19 thru 24	\$15	\$12	\$10	\$8

EARLY BIRD ENTRY FEE \$10
Postmarked by July 12, 2026

LAST DAY FOR ALL ENTRIES
July 24, 2026

\$5 FAIR ADMISSION

FOR KIDS, VETS & SENIORS

Tuesday, August 11th ONLY

For Kids 3 to 12, Veterans (with ID) and Seniors (60 and over)

GENERAL ADMISSION: \$10 • RIDE TICKETS SEPARATE

CHILDREN 2 AND UNDER & ACTIVE MILITARY (WITH ID) ARE FREE EVERY DAY!

CATTLE - Beef Breeding Cattle (continued)

MALE CLASSES

All Bulls Older than the Calf Classes MUST Have A Nose Ring Or A Bull Lead

1. Junior bull calf — January 1 - July 1 of this year
2. Winter bull calf — October 1 - December 31 of preceding year
3. Senior bull calf — August 1 - September 30 of preceding year
CHAMPION BULL CALF \$15 and Ribbon
RESERVE CHAMPION BULL CALF \$10 and Ribbon
4. Summer yearling bull — May 1 - July 31 of preceding year
5. Spring yearling bull — March 1 - April 30 of preceding year
6. Junior yearling bull — January 1 - February 28 of preceding year
CHAMPION YEARLING BULL \$15 and Ribbon
RESERVE CHAMPION YEARLING BULL \$10 and Ribbon
7. Senior yearling bull — August 1 - Dec. 31 of second preceding year
8. Bull, 2 year old — March 1 - July 31 of second preceding year
CHAMPION SENIOR BULL \$15 and Ribbon
RESERVE CHAMPION SENIOR BULL \$10 and Ribbon
GRAND CHAMPION BULL \$25 and Rosette
 All Senior, Junior and Calf Champion Bulls competing.
RESERVE GRAND CHAMPION BULL \$15 and Rosette
 Remaining Senior, Junior and Calf Champion Bulls and the Reserve to the Champion selected as Grand Champion.
9. Pair of bulls — Owned by exhibitor.

FEMALE CLASSES

10. Junior heifer calf —
 - A. January 1 - March 31 of this year
 - B. April 1 - July 1 of this year
11. Winter heifer calf — October 1 - December 31 of preceding year
12. Senior heifer calf — August 1 - September 30 of preceding year
CHAMPION HEIFER CALF \$15 and Ribbon
RESERVE CHAMPION HEIFER CALF \$10 and Ribbon
13. Summer yearling heifer — May 1 - July 31 of preceding year
14. Spring yearling heifer — March 1 - April 30 of preceding year
15. Junior yearling heifer — January 1 - February 28 of preceding year
16. Senior yearling heifer — August 1 - Dec. 31 of second preceding year
CHAMPION YEARLING HEIFER \$15 and Ribbon
RESERVE CHAMPION YEARLING HEIFER \$10 and Ribbon
17. Female, 2 year old — August 1 of fourth preceding year — July 31 of third preceding year
18. Aged female — Prior to July 31 of fourth preceding year
CHAMPION SENIOR FEMALE \$15 and Ribbon
RESERVE CHAMPION SENIOR FEMALE \$10 and Ribbon
GRAND CHAMPION FEMALE \$25 and Rosette
 All Senior, Junior and Calf Champion Females competing.
RESERVE GRAND CHAMPION FEMALE \$15 and Rosette
19. Cow and calf-calf born after January 1 of this year
20. Pair of calves, both sexes represented – owned by exhibitor.
21. Pair of yearlings, both sexes represented – owned by exhibitor.
22. Pair of females – owned by exhibitor.
23. Junior Get Of Sire — 3 animals Junior yearling or younger both sexes from same bull owned by exhibitor.
24. Senior Get Of Sire – 4 animals, both sexes - sired by same bull, owned by exhibitor.

CATTLE - Beef Breeding Cattle (continued)

SUPREME CHAMPION

BEEF BREEDING

\$50.00 and Banner

All Beef Grand Champion Bulls compete.

SUPREME CHAMPION

BEEF BREEDING

FEMALE \$50.00 and Banner

All Beef Grand Champion Females compete.

BEEF SHOWMANSHIP

RULES

1. Age of contestant will be determined on the day of the show.
2. Contestant must be a member of the immediate family of the owner or a regular handler for the owner whose cattle are being exhibited at the Fair.
3. Contestant is judged only on how well he or she handles and controls the animal.
4. There is no entry fee for showmanship class.

Class	1st	2nd	3rd	4th	5th	All Others
25 Ages 6-10	\$12.00	10.00	8.00	6.00	4.00	2.00
26 Ages 11-16	\$12.00	10.00	8.00	6.00	4.00	2.00
27 Peewee - Ribbons To All Participants						
28 Senior - 17 and over Ribbons To All Participants						

DAIRY CATTLE DEPARTMENT 10-B

Ayrshire

Brown Swiss

Guernsey

Holstein Friesian

Jersey

Section 9

Section 10

Section 11

Section 12

Section 13

OPEN CLASS DAIRY CATTLE SHOW
THURSDAY 5:00 P.M.

DAIRY CATTLE PREMIUMS

Classes 1 thru 9, 11 thru 16	\$25	\$20	\$15	\$10
Classes 10, 17 thru 21	\$20	\$15	\$12	\$10

MALE CLASSES

All Bulls Older than the Calf Classes MUST Have A Nose Ring Or A Bull Lead

1. Bull calf — September 1 of preceding year - April 30 of this year
2. Yearling bull — prior to August 31 of preceding year
GRAND CHAMPION BULL \$20 and Rosette
RESERVE GRAND CHAMPION BULL \$10 and Rosette
 Remaining 1st and 2nd Place Bulls to be shown for Reserve Champion

CATTLE - Dairy Cattle (continued)

FEMALE CLASSES

- 3. Junior heifer calf — March 1 - April 30 of this year
- 4. Intermediate heifer calf — December 1 of preceding year - February 28 of this year
- 5. Senior heifer calf — September 1 - November 30 of preceding year
- 6. Summer yearling heifer — June 1 - August 31 of preceding year
- 7. Junior yearling heifer — March 1 - May 31 of preceding year
- 8. Intermediate senior yearling — December 1 of second preceding year - February 28, of preceding year
- 9. Senior yearling heifer — September 1 - November 30 of second preceding year
- CHAMPION JUNIOR FEMALE** \$20 and Ribbon
- RESERVE CHAMPION JUNIOR FEMALE** \$10 and Ribbon
- 10. Young herd — 1 bull and 3 females all under 2 years old, owned by Exhibitor
- 11. Cow, 2 year old — September 1 of third preceding year - August 31 of second preceding year
- 12. Cow, 3 year old — September 1 of fourth preceding year - August 31 of third preceding year
- 13. Cow, 4 year old — September 1 of fifth preceding year - August 31 of third preceding year
- 14. Aged Cow prior to August 31 of fifth preceding year
- 15. Best uddered female in milk, owned by Exhibitor
- 16. Dry Cow — owned by Exhibitor
- CHAMPION SENIOR FEMALE** \$20 and Ribbon
- RESERVE CHAMPION SENIOR FEMALE** \$10 and Ribbon
- GRAND CHAMPION FEMALE** \$25 and Rosette
- All Senior and Junior Champion Females competing.*
- RESERVE GRAND CHAMPION FEMALE** \$15 and Rosette
- Remaining senior and junior Champion Females and Reserve to the Champion selected as Grand Champion.*
- 17. Get of Sire- 3 animals, both sexes
- 18. Best 3 Females — owned by exhibitor, one entry per exhibitor
- 19. Dairy Herd — 3 females, must have freshened, owned by exhibitor
- 20. Produce of Dam — 2 animals either sex, owned by exhibitor
- 21. Dam and daughter — any age **SUPREME CHAMPION FEMALE OF DAIRY SHOW** \$50 and Banner
- RESERVE CHAMPION FEMALE OF DAIRY SHOW** \$25 and Banner
- All Dairy Grand Champion Females competing held immediately after the last dairy class.*

DAIRY SHOWMANSHIP

RULES

- 1. Age of contestant will be determined on the day of the show.
- 2. Contestant must be a member of the immediate family of the owner or a regular handler for the owner whose cattle are being exhibited at the Fair.
- 3. Contestant is judged only on how well he or she handles and controls the animal.
- 4. There is no entry fee for showmanship class.

CATTLE - Dairy Cattle (continued)

Class	1st	2nd	3rd	4th	5th	All Others
22 Ages 6-10 Inclusive	\$12.00	10.00	8.00	6.00	4.00	2.00
23 Ages 11-16 Inclusive	\$12.00	10.00	8.00	6.00	4.00	2.00
24 Peewee - Ribbons To All Participants						
25 Senior - 17 and over Ribbons To All Participants						

CANINE SHOWMANSHIP DEPARTMENT 12

HOLLY EVERHART

Director-At-Large for Junior Fair, 4H, Canine & Sponsorships
Contact Info: CCFJrFair@yahoo.com

ALISON UNGAR
Superintendent

CANINE ENTRY RULES

- 1. 4H Members will not be charged a fee to be in the show.
- 2. To exhibit, you must purchase an exhibitor ticket which includes 2 complimentary gate admissions. The exhibitor ticket allows entry in all Open Class Divisions.
- 3. Entry fee for **EACH CLASS** (except Best in Show classes) is **\$5 PER ENTRY. No entry fee for current Cuyahoga County 4H members.**
- 4. All dogs must be current on distemper and parvo vaccinations as recommended by the manufacturer of the vaccine. All dogs must have a current rabies vaccination certificate. Proof of vaccinations will be required. No puppies under 6 months of age will be allowed to show.
- 5. All dogs must be on a leash at all times unless working in an off-leash class.
- 6. Exhibitors must park as directed by fair parking lot attendants at Gate 5 (off Bagley Rd) ONLY. Parking pass and dog walk pass will be included with your exhibitor tickets upon request.
- 7. Handlers may show only 1 dog per class.
- 8. The show judge and/or committee reserves the right to combine two or more classes as a group class when there is only 1 entry in a class.
- 9. Dogs do not have to be a registered breed; however, the American Kennel Club breed, variety, and group classifications will be followed when assigning dogs to their respective classes.
- 10. Pre-Registered check in will begin at 10:30am Sunday of Fair Week.
- 11. Dogs are only allowed in marked areas. Absolutely NO dogs are allowed on the Midway of the Cuyahoga County Fairgrounds. Exhibitors can take dogs home, and return to enjoy the Fair (must get hand stamped on way out). **NO DOGS ARE TO BE LEFT IN CARS IN PARKING LOT.** Crated dogs may be left in shaded crating area as zoned by Dog Committee. Owner/handler must provide crates and water bowls/buckets. CCAS is not responsible for lost/damaged items. Owner/handler must provide current cell phone in case of emergency.
- 12. The Cuyahoga County Agricultural Society, its Board and Members, and the Cuyahoga County Council and Executives shall not be responsible for any damage, injury or death to any person or property arising from the action of any animal, including dogs, at the Fair. The Owner and/ or Handler of the animal shall indemnify, defend and hold harmless the aforementioned County persons and entities from any and all such claims, demands or suits arising from the actions of such animal.

CANINE (continued)

14. Owners and handlers are responsible for cleaning up after their dogs. Please use marked potty areas. NO pottying of dogs allowed on/in any building.
15. No female dogs in season will be allowed on Fairgrounds.
16. Dogs will be disqualified and removed from the grounds for uncontrolled behavior.
17. All dogs must be on leather or fabric leash; no chain, rope or flexi-leads allowed on grounds. No Prong or Electronic Training Collars allowed on grounds.
18. Fair management has the right to change location.

RIBBONS AWARDED FOR FIRST FOUR PLACINGS IN EACH CLASS
ROSETTE AWARDED FOR BEST JUNIOR SHOWMAN

OPEN CLASS DOG SHOW

SUNDAY, AUGUST 16, 2026

SHOWN IN JR. FAIR BLDG

11:00 AM

LOCATION MAY CHANGE DUE TO WEATHER

HOLLY EVERHART

Director-At-Large for Junior Fair, 4H, Canine & Sponsorships
Contact Info: CCFJrFair@yahoo.com

PLEASE ENTER AND EXIT FAIRGROUNDS VIA GATE 5 - BAGLEY ROAD. PLEASE MAKE SURE ALL DOGS ARE REMOVED FROM FAIRGROUNDS PROPERTY (INCLUDING PARKING LOT) BY 9:30 AS THERE MAY BE FIREWORKS THIS EVENING.

JUNIOR SHOWMANSHIP CLASS

Best Junior Showman - the first place winners from classes 1-4 are automatically entered in Best Junior Showman.

1. Senior Class — Handler must be 15 years old and less than 18 years old on the day of the show.
2. Intermediate Class — Handler must be 12 years old and less than 15 years old on the day of the show.
3. Junior Class — Handler must be 9 years old and less than 12 years old on the day of the show.
4. Pee-Wee Class — any exhibitor less than 9 years old on the day of the show.

OBEDIENCE CLASSES

AB CLASSES 20-21 - ONLY ENTER 1
CLASSES 22-23 - ONLY ENTER 1

20. Pre-Novice Obedience (all exercises on leash)
21. Novice Obedience (mixture of on leash and off leash exercises)
22. Rally Novice Obedience (Rally course on leash)
23. Rally Advanced Obedience (Rally course off leash)

FUN CLASSES

25. Longest Tail
26. Shortest Tail
27. Longest Ears
28. Shortest Ears
29. Tallest Dog
30. Shortest Dog

CANINE (continued)

31. Longest Catch (how far away can you stand and toss your dog a treat/toy that they catch?)
32. Youth Costume Contest (exhibitor 18 years and under) - dog in costume, exhibitor costume optional
33. Adult Costume Contest (exhibitor over 18 years) dog in costume, exhibitor costume optional
34. Trick Dog Class - Adult - Show us your best tricks. Props may be used. There will be a time limit.
35. Trick Dog Class - Youth - Show us your best tricks. Props may be used. There will be a time limit.

QUESTIONS: EMAIL CCFJRFair@YAHOO.COM

OPEN HAY AND GRAIN DEPARTMENT 75

Bruce Stainbrook

Chair

Ryan & Krysti Nageotte & Chris Muckinhaupt

Co-Chairs

Director Jeff Collins

JCollins.CLE@gmail.com

PRE-REGISTRATION REQUIRED BY FRIDAY, AUGUST 7, 2026, VIA EMAIL TO JEFF COLLINS AT ABOVE EMAIL

ENTRIES WILL BE RECEIVED ON SATURDAY, AUGUST 8, 2026, FROM 8:00AM UNTIL 3:00PM

ALL ENTRIES MUST BE IN PLACE BY 10:00AM, TUESDAY, AUGUST 11, 2026

SECTION 01: LONG HAY: 8" THICK OR EQUIVALENT OF DIVISIONS

All Premiums: \$6, \$5, \$4, \$3

- 01: 1st cut: Alfalfa or grass mix, not over 50% grasses
- 02: Later cut: Alfalfa or grass mixed, not over 50% grasses
- 03: Other legumes or grass mixed, not over 50% grass
- 04: Grass: 1st cut, mix of timothy &/or other grasses-not more than 10% legumes
- 05: Grass: later cut, mix of timothy &/or other grasses-not more than 10% legumes
- 06: Mixed Hay: any not in previous classes, 50%, or more singly or combo of alfalfa, tim clover & grasses
- 07: Summer annual grasses Sudangrass, Sorghum Sudangrass, hybrids, etc.
- 08: Big blue stem grass, warm season, slice of bale or bundle
- 09: Switch grass or native grasses
- 10: Hops
- 11: Soybean Stalks (Roots On)
- 12: Straw

Grand Champion Hay Exhibit – Rosette and \$100



EARLY BIRD ENTRY FEE \$10
Postmarked by July 12, 2026

LAST DAY FOR ALL ENTRIES
July 24, 2026

DAIRY GOATS

DEPARTMENT 34-A

JEFF COLLINS

Director-At-Large of Goats
Contact Info: JCollins.CLE@gmail.com

JUDGING

Thursday of Fair Week • 12:00 P.M.
Official ADGA Open Doe Show
ADGA Rules Shall Govern
(Show Times Subject To Change)

Sponsored by

The Cuyahoga County Agricultural Society

DAIRY GOATS ENTRY RULES

- To exhibit, you must purchase an exhibitor's ticket. Your one exhibitor ticket permits you to exhibit in all other open class divisions and/or departments of the Cuyahoga County Fair.
- The Entry Fee for each animal is \$1.00 per head.
- Eligibility to Exhibit:
 - Competition is open to all.
 - The exhibitor must be the owner of the animals exhibited.
 - Each animal must comply with the "Inspection and Health Requirements of Livestock Exhibited in Ohio" printed in this book.
 - The Exhibitor must present Registration Certificates upon request of the Director-At-Large In Charge. **Goats must be tattooed.**
 - All buck goats are barred.
- Please specify the minimum number of pens you will require on your Entry Form. Entries will be accepted as received, due to the limited space available.
- See Exhibitor rules for entry deadline. Mail your Entry Form and make checks or money orders payable to:
Cuyahoga County Fair • P.O. Box 135 • Berea, Ohio 44017
- Animals must be in their pens before 12:00 Noon on Tuesday the opening day of the Fair. They will be received starting on the previous Sunday. No animal may be removed from the Fair before 8:00 P.M. on the last day of the Fair.
- No bedding will be furnished. All pens and aisles must be cleaned before 10:00 A.M. each day.
- The Entry Requirements of the Cuyahoga County Fair as shown in this Premium List apply to this Department.
- The Junior & Senior Shows are not separately sanctioned.
- The order of the show IS NOT subject to change.

DAIRY GOAT BREEDS

SECTIONS

- | | |
|-------------|--------------------------|
| 1. ALPINE | 4. ALL OTHER PURE BREEDS |
| 2. LAMANCHA | 5. RECORDED GRADES |
| 3. NUBIAN | |

\$8.00 WILL BE PAID FOR EACH GOAT EXHIBITED

Premiums: 1st - \$9.00; 2nd - \$7.00; 3rd - \$5.00; 4th - \$4.00

GOATS (continued)

Class

- Junior Kid — Born after 4/1 of this year
- Intermediate Kid — Born 3/1 through 3/31 of this year
- Senior Kid — Born 1/1 through 2/28 of this year
- Dry Yearling — 1 year and under 2, never in milk
Junior Champion \$10 + Rosette
Reserve Junior Grand Champion \$ 5 + Rosette
- Does in milk — 1 year and under 2
- Does in milk — 2 years and under 3
- Does in milk — 3 years and under 4
- Does in milk — 4 years and under 5
- Does in milk — 5 years and over
Senior Champion \$10 + Rosette
Reserve Senior Champion \$ 5 + Rosette
Grand Champion Rosette
Reserve Grand Champion Rosette
- Champion Challenge Class

Premiums: 1st - \$15; 2nd - \$10; 3rd - \$7; 4th - \$5

- Get of Sire — Consist of 3 does with the same sire. Need not be owned by the same exhibitor.
- Dairy Herd — Shall consist of 4 does of any age entered in open classes.
- Dam and Daughter — The entries need not be owned by the exhibitor.
- Best Udder — To be judged on udder alone. Entry in this class must be owned by the exhibitor.
- Best Doe of Show (all breeds)** \$25 + Rosette

MEAT GOATS

DEPARTMENT 34-B

JUDGING

Thursday of Fair Week • 3:00 P.M.
(Show Times Subject To Change)

Sponsored by The Cuyahoga County Agricultural Society

MEAT GOATS ENTRY RULES

- To exhibit, you must purchase an exhibitor's ticket. Your one exhibitor ticket permits you to exhibit in all other open class divisions and/or departments of the Cuyahoga County Fair.
- The Entry Fee for each animal is \$1.00 per head.
- Eligibility to Exhibit:
 - Competition is open to all.
 - The exhibitor must be the owner of the animals exhibited.
 - Each animal must comply with the "Inspection and Health Requirements of Livestock Exhibited in Ohio" printed in this book.
 - The Exhibitor must present Registration Certificates upon request of the Director-At-Large In Charge. **Goats must be tattooed.**
 - All buck goats are barred.
- Please specify the minimum number of pens you will require on your Entry Form. Entries will be accepted as received, due to the limited space available.
- See Exhibitor rules for entry deadline. Mail your Entry Form and make checks or money orders payable to:
Cuyahoga County Fair • P.O. Box 135 • Berea, Ohio 44017
- Animals must be in their pens before 12:00 Noon on Tuesday the opening day of the Fair. They will be received starting on the previous Sunday. No animal may be removed from the Fair before 8:00 P.M. on the last day of the Fair.

GOATS (continued)

- No bedding will be furnished. All pens and aisles must be cleaned before 10:00 A.M. each day.
- The Entry Requirements of the Cuyahoga County Fair as shown in this Premium List apply to this Department.
- The Junior & Senior Shows are not separately sanctioned.
- The order of the show IS NOT subject to change.

MEAT GOAT BREEDS SECTIONS

- | | |
|------------|--------------------------|
| 1. BOER | 5. ALL OTHER PURE BREEDS |
| 2. KIKO | 6. RECORDED GRADES |
| 3. SPANISH | |
| 4. SAVANNA | |

\$8.00 WILL BE PAID FOR EACH GOAT EXHIBITED
Premiums: 1st - \$9.00; 2nd - \$7.00; 3rd - \$5.00; 4th - \$4.00

Class

- Junior Kid — Born after 4/1 of this year
- Intermediate Kid — Born 3/1 through 3/31 of this year
- Senior Kid — Born 1/1 through 2/28 of this year

Junior Champion	\$10 + Rosette
Reserve Junior Grand Champion	\$5 + Rosette
Senior Champion	\$10 + Rosette
Reserve Senior Champion	\$5 + Rosette
Grand Champion	Rosette
Reserve Grand Champion	Rosette
- Champion Challenge Class
- Best Doe of Show (all breeds) \$25 + Rosette

DRAFT HORSES DEPARTMENT 19

DENNIS ECK

Director-At-Large for Apiary, Draft Horse/Pony, Horse Barns,
Beer & Wine Sales
Contact Info: Denscritters@yahoo.com

DRAFT HORSE SECTIONS

- | | |
|-----------------|--------------------|
| 1. BELGIANS | 3. PERCHERON |
| 2. SHIRE/CLYDES | 4. ANY OTHER BREED |

ENTRY RULES

- To exhibit, you must purchase an exhibitor's ticket which includes 2 complimentary gate admissions. Your one exhibitor ticket permits you to exhibit in all other open class divisions and/or departments of the Cuyahoga County Fair.
- The Entry Fee for each animal is 10% of the First Place Premium offered in the class entered.
- Eligibility To Exhibit:
 - Competition is open to all draft horses quartered on the Fairgrounds for the week.
 - The exhibitor must be the owner of the animals exhibited.

DRAFT HORSES (continued)

- Each animal must comply with the "Inspection and Health Requirements of Livestock Exhibited in Ohio," printed in this book.
 - The exhibitor must present registration certificates upon request of the Director-At-Large In Charge.
- Please specify the minimum number of stalls required for horses and tack on your Entry Form. Entries will be accepted as received, due to the limited number of stalls available.
 - See exhibitor rules for entry deadline. Mail your Entry Form and make your check or money order payable to:
Cuyahoga County Fair • P.O. Box 135 • Berea, Ohio 44017
 - The age of horses shall be determined as of January 1st.
 - All horses must be broke to lead and be manageable for exhibition in the show ring.
 - All stallions must be tied with halter and neck rope or strap AT ALL TIMES.
 - Animals must be in their stalls before 5 P.M. on Monday. They will be received on the previous Sunday. All Draft Horses will be released from their stalls at 6:00 P.M. on closing night, Sunday.
 - No bedding will be furnished. All stalls and aisles must be cleaned before 10:00 A.M. each day.
 - The Entry Requirements of the Cuyahoga County Fair apply to this department.
 - All exhibitors will conduct themselves in a professional and courteous manner. No profane or abusive language will be tolerated. Anyone found violating this policy risks being excluded from future Fair events. The Director-At-Large has final say on all stall assignments.

DRAFT HORSE HALTER CLASSES DEPARTMENT 19-A

HALTER CLASS SECTIONS

- | | |
|-----------------|--------------------|
| 1. BELGIANS | 3. PERCHERON |
| 2. SHIRE/CLYDES | 4. ANY OTHER BREED |

JUDGING

Cow Palace Arena • Tuesday – 5:00 P.M.

Class	PREMIUMS				
	1st	2nd	3rd	4th	5th
1. Stallion, 3 years or over	\$27.50	16.50	11.00	9.00	7.00
2. Stallion, 1 year and under 3	\$27.50	16.50	11.00	9.00	7.00
3. Stud Colt, under 1 year	\$27.50	16.50	11.00	9.00	7.00
Stallion Champion & Reserve Champion 1st & 2nd places classes 1-3 — Rosettes ONLY					
4. Mare or Filly, 3 years or over	\$27.50	16.50	11.00	9.00	7.00
5. Filly 1 year and under 3 years	\$27.50	16.50	11.00	9.00	7.00
6. Filly, under 1 year	\$27.50	16.50	11.00	9.00	7.00
Mare/Filly Champion & Reserve Champion 1st & 2nd places classes 4-6 — Rosettes ONLY Class					
7. Gelding 5 years and over	\$27.50	16.50	11.00	9.00	7.00
8. Gelding 3 & 4 years	\$27.50	16.50	11.00	9.00	7.00
9. Gelding 2 years & under	\$27.50	16.50	11.00	9.00	7.00

DRAFT HORSES (continued)

Gelding Champion & Reserve Champion 1st & 2nd places classes 7-9 — Rosettes ONLY

SUPREME CHAMPION

CHAMPION & RESERVE DRAFT PONIES TO COMPETE - ALL SEXES, ALL BREEDS

10. Mare & suckling foal	\$27.50	16.50	11.00
11. Stallion 3 years or over and two mares, owned by one exhibitor	\$27.50	16.50	11.00
12. Matched pairs halter	\$27.50	16.50	11.00
13. Best three of breed, owned by one exhibitor	\$27.50	16.50	11.00

DRAFT HORSE YOUTH SHOWMANSHIP

RULES FOR YOUTH SHOWMANSHIP

- Age of Contestant will be determined on the day of show.
- Contestant must be a member of the immediate family of the owner or a regular handler for the owner whose draft horses are being exhibited at the Fair.
- Contestant is judged only on how well he or she handles and controls the horse.
- There is NO entry fee for the Showmanship Class.**

Class	1st	2nd	3rd	4th	5th	Other
14. PeeWee Showmanship Ages 7 & Under — Ribbons to all						
15. Ages 6 - 10	\$12.00	10.00	8.00	6.00	4.00	2.00
16. Ages 11 - 16	\$12.00	10.00	8.00	6.00	4.00	2.00
17. Ages 17 and over	\$12.00	10.00	8.00	6.00	4.00	2.00

DRAFT HORSE HITCH CLASSES DEPARTMENT 19B

JUDGING

GRANDSTAND

**Thursday • First Class – 12 Noon
Rain Date Friday**

ENTRY RULES

- To exhibit, you must purchase an exhibitor's ticket which includes 2 complimentary gate admissions. Your one exhibitor ticket permits you to exhibit in all other open class divisions and/or departments of the Cuyahoga County Fair.
- The Entry Fee in each class is 10% of the First Place Premium offered in the class entered.
- Eligibility To Exhibit:
 - Each animal must comply with the "Inspection and Health Requirements of Livestock Exhibited in Ohio," printed in this book.
 - Mares, Geldings and/or Stallions are eligible.
 - Competition is open to all draft horses quartered on the Fairgrounds for the week.
 - In Single Hitch Classes horses must be hitched to a two wheel cart; in all other classes, hitched to a suitable vehicle.
- Exhibitors must specify on the Entry Forms the classes to be entered. Mail your Entry Forms and make checks or money orders payable to:
Cuyahoga County Fair • P.O. Box 135 • Berea, Ohio 44017
- No more than two persons shall be permitted on box or wagon during the competition. Adult must accompany youth drivers.

- Driver and assistant must wear hat, coat and tie.
- All entries shall be ready well in advance of class time to avoid delays. Hitches not ready when a class is called will not be allowed to show.
- All horses must be broke to drive and be manageable for competition on the track.
- The hitch classes will be judged on Quality, Performance and Ease of Handling.
- The Entry Requirements of the Cuyahoga County Fair apply to this Department.

Horse & Pony Hitch Classes will be alternated.

Class	PREMIUMS				
	1st	2nd	3rd	4th	5th
1. Single Hitch	\$40.00	30.00	20.00	15.00	Ribbon
2. Single Hitch, Lady to Drive	\$40.00	30.00	20.00	15.00	Ribbon
3. Single Hitch, Youth to Drive	\$20.00	20.00	20.00		
4. Tandem Hitch	\$90.00	65.00	40.00	25.00	Ribbon
5. Pair Hitch	\$90.00	65.00	40.00	25.00	Ribbon
6. Pair Hitch, Youth to Drive	\$20.00	20.00	20.00		
7. Unicorn Hitch	\$100.00	75.00	50.00	30.00	Ribbon
8. Four Hitch	\$125.00	90.00	65.00	40.00	Ribbon
9. Six Hitch	\$150.00	115.00	90.00	65.00	Ribbon

DRAFT PONIES DEPARTMENT 20

DRAFT PONIES ENTRY RULES

- To exhibit, you must purchase an exhibitor's ticket which includes 2 complimentary gate admissions. The exhibitor ticket allows entry to exhibit in all other open class divisions and/or departments.
- The entry fee for each animal is 10% of the First Place Premium offered in the class entered.
- Eligibility to exhibit:
 - Competition is open to all draft ponies quartered on the fairgrounds for the week.
 - The exhibitor must be the owner of the animals exhibited.
 - Each animal must comply with the "Inspection and Health Requirements of Livestock Exhibited in Ohio," printed in this book.
 - The exhibitor must present registration certificates upon request of the Director-At-Large In Charge.
- Please specify the minimum number of stalls required for ponies and tack on your entry form. Entries will be accepted as received, due to the limited number of stalls available.
- See exhibitor rules for deadline. Mail your entry form and make your checks or money orders payable to: Cuyahoga County Fair.
- The age of ponies shall be determined as of January 1st.
- All horses must be broke to lead and manageable for exhibition in the show ring.
- All stallions must be tied with halter and neck rope or strap AT ALL TIMES.
- Animals must be in their stalls before 12:00 Noon on Monday and may be received on Sunday. All Draft Ponies will be released from their stalls at 7:00 P.M. Sunday.
- No bedding will be furnished. All stalls and aisles must be cleaned before 10:00 A.M. each day.
- All ponies must remain in their stall during fair hours with the exception of show day preparation. When preparing for show all aisles where ponies are being moved must be blocked to fair visitors.

DRAFT HORSES (continued)

- All exhibitors will conduct themselves in a professional and courteous manner. No profane or abusive language will be tolerated. Anyone found violating this policy risks being excluded from future Fair events. The Director-At-Large has final say on all stall assignments.

DRAFT PONY HALTER CLASSES DEPARTMENT 20-A

JUDGING
Cow Palace Arena
Tuesday – 1:00 P.M.

DRAFT PONY HALTER CLASS SECTIONS

1. GRADE PONIES 2. REG. HAFLINGER

PREMIUMS	1st	2nd	3rd	4th	5th
1. Stallion (any age)	\$27.50	16.50	11.00	9.00	7.00
Stallion Champion Reserve Champion - Class 1					
2. Gelding (3 years & under)	\$27.50	16.50	11.00	9.00	7.00
3. Gelding (4 years & over)	\$27.50	16.50	11.00	9.00	7.00
Champion Gelding & Reserve Champion - Classes 2 & 3					
4. Foals (either sex)	\$27.50	16.50	11.00	9.00	7.00
5. Yearling Mare	\$27.50	16.50	11.00	9.00	7.00
6. Mares (3 years & under)	\$27.50	16.50	11.00	9.00	7.00
7. Mares (4 years & over)	\$27.50	16.50	11.00	9.00	7.00
Champion Mare & Reserve Champion - Classes 5 - 6 - 7					
9. Mare & Foal	\$27.50	16.50	11.00	9.00	7.00
10. Best 3 by One Exhibitor	\$27.50	16.50	11.00	9.00	7.00
11. Matched Pair	\$27.50	16.50	11.00	9.00	7.00
12. Get of Sire	\$27.50	16.50	11.00	9.00	7.00
(Stallion & 3 offspring)					

Supreme Champion in all sex, all breed

DRAFT PONY YOUTH SHOWMANSHIP

RULES

- Age of contestant will be determined on the day of show.
- Contestant must be a member of the immediate family of the owner or a regular handler for the owner whose draft ponies are being exhibited at the Fair.
- Contestant is judged only on how well he or she handles and controls the horse.
- There is NO entry fee for the Showmanship Class.**
- Showmanship Classes for youth will be all breeds combined.

Class	1st	2nd	3rd	4th	5th	All Others
13. Ages 6-10	\$12.00	10.00	8.00	6.00	4.00	2.00
14. Ages 11-16	\$12.00	10.00	8.00	6.00	4.00	2.00
15. Peewee - Ribbons to all participants						
16. Senior 17 & Over	\$12.00	10.00	8.00	6.00	4.00	2.00

DRAFT PONY HITCH CLASSES DEPARTMENT 20-B

JUDGING
Thursday – 12 Noon
Rain Date Friday

GRANDSTAND ENTRY RULES

- To exhibit, you must purchase an exhibitor's ticket that includes 2 complimentary gate admissions. The exhibitor ticket allows entry in all other open class divisions and/or departments.
- The entry fee in each class is 10% of the First Place Premium offered in the class entered.
- Eligibility To Exhibit:
 - Each animal must comply with the "Inspections and Health Requirements of Livestock Exhibited in Ohio," printed in this book.
 - Mares, Geldings and/or Stallions are eligible.
 - Draft Ponies not quartered on the grounds are ineligible.
 - In Single Hitch Classes ponies must be hitched to a two-wheel cart; in all other classes, hitched to a suitable vehicle.
- Exhibitors must specify on the entry forms the classes to be entered. Mail your entry forms and make checks or money orders payable to:

Cuyahoga County Fair • P.O. Box 135 • Berea, Ohio 44017

 Entry forms will be accepted at the Fair Office.
- No more than two persons are permitted on box or wagon during the competition. Adult must accompany youth drivers.
- Driver and assistant must wear a hat, coat, and tie.
- All entries must be ready to avoid delays well in advance of class time. Hitches that are not ready when a class is called will not show.
- All ponies must be broke to drive and be manageable for competition on the track.
- The hitch class will be judged on quality, performance and ease of handling.

Class	1st	2nd	3rd	4th	5th
1. Single Hitch**	\$40.00	30.00	20.00	15.00	Ribbon
2. Single Hitch, Lady to Drive	\$40.00	30.00	20.00	15.00	Ribbon
3. Single Hitch, Youth to Drive	\$20.00	20.00	20.00		
4. Tandem Hitch	\$90.00	65.00	40.00	25.00	Ribbon
5. Pair Hitch	\$90.00	65.00	40.00	25.00	Ribbon
6. Pair Hitch, Youth to Drive	\$20.00	20.00	20.00		
7. Unicorn Hitch	\$100.00	75.00	50.00	30.00	Ribbon
8. Four Hitch	\$125.00	90.00	65.00	40.00	Ribbon
9. Six Hitch	\$150.00	115.00	80.00	65.00	Ribbon

****Horse and Pony Classes will be alternated.**

**DOGS ARE NOT PERMITTED ON THE
FAIRGROUNDS UNLESS THEY ARE
SERVICE DOGS. LEASHES
ARE MANDATORY.**

WE REQUEST THAT ALL SERVICE DOGS WEAR
A VEST WHILE ON THE FAIRGROUNDS AND
OWNERS KEEP A COPY OF THEIR REGISTRY
ON THEIR PERSON.

HORSE SHOW DEPARTMENT 55

GAIL WIND

Director-At-Large for Harness Racing & Horse/Pony Show
Contact Info: Myequine123@yahoo.com

JUDGING

Saturday of Fair Week • 9:00 AM

High Point Youth Award Trophy / 6 Ribbons per Class

High Point Youth Gift Certificate donated by
SCHNEIDER SADDLERY

English & Western Jackpot Class Gift Cards donated by
BIG DEE'S TACK & VET.

ENTRY RULES

- To exhibit, you must purchase an exhibitor's ticket which includes two complimentary gate admissions. Your one exhibitor ticket permits you to exhibit in all of the Open Class divisions and/or departments of the Cuyahoga County Fair.
- All entries must be made on the OFFICIAL CUYAHOGA COUNTY FAIR HORSE SHOW ENTRY BLANK.
- Exhibitors cancelling entries for any reason shall forfeit entry fees.
- NO STALLIONS ARE PERMITTED IN YOUTH CLASSES.
- Each pony or horse must comply with the "Inspection and Health Requirements of Livestock Exhibited in Ohio," printed in this book.
- The Entry Requirements of the Cuyahoga County Fair apply to this Department, except Rule #3.
- Horse Show class and entry information available at cuyfair.com>Music&Events>Animals. Entries will also be accepted for the Horse Show on the day of the show at the Horse Show Office.

POULTRY DEPARTMENT 58

TOM SABREY

Director-At-Large for Rabbits, Cavies, Poultry, Floral,
Produce, Sheep & Swine
Contact Info: Rabbitman83@aol.com

Bill Fox
Judge

Manny Carr
Superintendent - Chickens, Pigeons, Waterfowl & Eggs

JUDGING

Chickens - Ducks - Geese - Pigeons - Eggs
Wednesday — 9:00 A.M.

(Pigeon judging immediately following Poultry judging)

POULTRY (continued)

POULTRY ENTRY RULES

- To Exhibit, you must purchase an exhibitor's ticket which includes 2 complimentary gate admissions. Your one exhibitor ticket permits you to exhibit in all other open class divisions and/or departments of the Cuyahoga County Fair. See Exhibitor Rules for entry deadline. CHICKENS, DUCKS & GEESE SINGLES \$1.00 - per bird. PIGEONS \$1.00 - per bird.
- All Poultry must show negative pullorum test before cooping. All testing paperwork **MUST** accompany entry forms.
- Exhibitor must show the NUMBER and NAME of breed on entry form.
- No diseased poultry allowed on the grounds. No premium will be paid on any bird deemed unworthy.
- All birds must be in position for judging not later than 12 Noon, Monday.
- The American Standard of Perfection, as revised by the American Poultry Association, will be the guide for the judge in awarding the premiums. All birds will be judged by comparison. American Standard rules for disqualification will be enforced.
- Priority is given to previous exhibitors.
- Priority is given to residents of Cuyahoga County until cooping space is filled.
- Limit of 125 entries per family.
- Each exhibitor will be permitted to enter NO MORE than TWO BIRDS in any one class. **NO** turkeys.
- Every precaution will be taken to properly protect exhibits in this department and for this purpose watchmen will be on duty in this building day and night during the Fair.
- Any specimen showing symptoms of disease when received or during the Fair, will immediately be removed from the exhibit, cared for by the superintendent, returned to the owner, or destroyed.
- Drinking cups and free coops will be furnished all poultry (space permitting).
- All poultry will be fed and watered during the Fair.
- Feed will be furnished by the Fair.
- Birds will be released at 9:00 P.M. Sunday.
- Band your birds so that they are easily identified in case another poultry person gets your bird.
- See Additional rules under Section 500 — PIGEONS.
NOT RESPONSIBLE FOR BIRDS LEFT AFTER 12:00 MIDNIGHT SUNDAY, THE LAST DAY OF THE FAIR.

CHICKEN SPECIAL AWARDS

BEST CHICKEN IN THE SHOW	\$10.00
Best Cock Bird in Show	\$5.00
Best Hen Bird in Show	\$5.00
Best Pullet in Show	\$5.00
Best Cockerel in Show	\$5.00
Best Bantam Cock in Show	\$5.00
Best Bantam Hen in Show	\$5.00
Best Cockerel in Show	\$5.00
Best Bantam Pullet in show	\$5.00

PREMIUMS FOR CHICKENS

Premiums: 1st - \$5.00; 2nd - \$3.00; 3rd - \$2.00

CHICKEN SECTIONS AGE/SEX

- | | |
|---------|-------------|
| 1. COCK | 3. COCKEREL |
| 2. HEN | 4. PULLET |

POULTRY (continued)

BREED CHICKENS

SECTION 1 – AMERICAN

- | | |
|---------------------------------|------------------------------|
| 1 Plymouth Rock-barred | 13 Buff Wyandotte |
| 2 Plymouth Rock-white | 14 Silver Penciled Wyandotte |
| 3 Plymouth Rock-buff | 15 S.C. Rhode Island Reds |
| 4 Partridge Plymouth Rock | 16 R.C. Rhode Island Reds |
| 5 Columbian Plymouth Rock | 17 Dominique |
| 6 Silver Penciled Plymouth Rock | 18 New Hampshire Reds |
| 7 Silver Laced Wyandotte | 19 Jersey White Giants |
| 8 White Wyandotte | 20 Jersey Black Giants |
| 9 Columbian Wyandotte | 21 Java |
| 10 Partridge Wyandotte | 22 Buckeye |
| 11 Golden Laced Wyandotte | 23 AOV American |
| 12 Black Wyandotte | |

SECTION 2 – ENGLISH

- | | |
|-------------------|---------------------------|
| 1 Dorkings | 7 Cornish White |
| 2 Orpington Buff | 8 Cornish Dark |
| 3 Orpington Black | 9 Cornish White Laced Red |
| 4 Orpington White | 10 Black Australorp |
| 5 Sussex Speckled | 11 Redcaps |
| 6 Sussex Light | 12 AOV English |

SECTION 3 – MEDITERRANEAN

- | | |
|---------------------------|----------------------------|
| 1 Leghorn S.C. Lt. Br. | 12 White - Minorca S.C. |
| 2 Leghorn R.C. Lt. Br. | 13 White - Minorca R.C. |
| 3 Leghorn Black | 14 Anconas S.C. |
| 4 Leghorn Silver | 15 Anconas R.C. |
| 5 Leghorn R.C. White | 16 Buttercups |
| 6 Leghorn S.C. White | 17 Andalusian Blue |
| 7 Leghorn - Red | 18 White Faced Spanish |
| 8 Leghorn Dark Brown S.C. | 19 Columbian Leghorn |
| 9 Leghorn Buff | 20 Leghorn Dark Brown R.C. |
| 10 Minorca Black S.C. | 21 AOV Mediterranean |
| 11 Minorca Buff | |

SECTION 4 – ASIATIC FOWLS

- | | |
|-------------------|----------------------|
| 1 Brahma Light | 6 Cochin Black |
| 2 Brahma Dark | 7 Cochin White |
| 3 Brahma Buff | 8 Cochin Buff |
| 4 Langshans White | 9 Cochin Partridge |
| 5 Langshans Black | 10 AOV Asiatic Fowls |

SECTION 5 – HAMBURGS

- | | |
|-------------------|-------------------|
| 1 Golden Spangled | 5 Golden Penciled |
| 2 Silver Spangled | 6 Silver Penciled |
| 3 Black | 7 AOV Hamburg |
| 4 White | |

POULTRY (continued)

SECTION 6 – POLISH

- | | |
|-----------------------|--------------|
| 1 White crested black | 4 White |
| 2 Golden | 5 Buff laced |
| 3 Silver | 6 AOV Polish |

SECTION 7 – GAMES

- | | |
|-----------------------------|-------------------------|
| 1 Modern Game - BB Red | 3 Modern Game - Birchen |
| 2 Modern Game - Brown - Red | 4 AOV Modern Game |

SECTION 8 – MISCELLANEOUS

- | | |
|--------------|-----------------------|
| 1 Americana | 10 Lakenvelders |
| 2 Malays | 11 Campines |
| 3 Crevecouer | 12 Faverolles |
| 4 Frizzle | 13 Houdans Mottled |
| 5 Yokohama | 14 Houdans White |
| 6 Turkins | 15 Cubalaya |
| 7 Sumatras | 16 La Fleche |
| 8 Araucanas | 17 White Phoenix |
| 9 Sultans | 18 AOV Standard Breed |
| | 19 French Maran |


BANTAMS

SECTION 9 – MODERN GAME

- | | |
|----------------------|-------------------|
| 1 Black Breasted Red | 6 Red Pyle |
| 2 Brown Red | 7 White |
| 3 Golden Duckwing | 8 Black |
| 4 Silver Duckwing | 9 AOV Modern Game |
| 5 Birchen | |

SECTION 10 – OLD ENGLISH GAME

- | | |
|----------------------|---------------------|
| 1 Black Breasted Red | 7 Spangled |
| 2 Golden Duckwing | 8 Brown Red |
| 3 Silver Duckwing | 9 Blue |
| 4 Red Pyle | 10 Creole |
| 5 White | 11 AOV English Game |
| 6 Black | |



Did you know?

We have a Wind Turbine!

Experience the power of the wind through our 262 foot tall, 500 kW wind turbine.

Be sure to visit our 2,000 sq. ft. Sustainability Center during the Fair!

POULTRY - BANTAMS (continued)

SECTION 11 – SINGLE COMB

- | | |
|--------------------------------|---------------------------|
| 1 Japanese Black Tailed, White | 14 Turkins |
| 2 Japanese Buff Black Tailed | 15 Leghorn S.C. White |
| 3 Japanese - white | 16 Minorcas S.C. Black |
| 4 Japanese - black | 17 Partridge Rock |
| 5 Plymouth barred | 18 Silvered Penciled Rock |
| 6 Plymouth white | 19 Buff Rock |
| 7 Dark Brown Leghorn | 20 Columbian Rock |
| 8 Light Brown Leghorn | 21 Gray Japanese |
| 9 Rhode Island Reds | 22 Blue Japanese |
| 10 Morried Japanese | 23 Self Blue Japanese |
| 11 Blue Red Japanese | 24 American Serama |
| 12 White Beared Japanese | 25 AOV Single Comb |
| 13 Anconas | |

SECTION 12 – ROSE COMB

- | | |
|---------------------------------|-------------------------------|
| 1 Rhode Island Red, R.C. | 12 Leghorn - white |
| 2 Sebrights - golden | 13 Wyandottes - golden laced |
| 3 Sebrights - silver | 14 Leghorn - brown |
| 4 Rosecombs - black | 15 Wyandottes - blueponese |
| 5 Rosecombs - white | 16 Wyandottes - columbian |
| 6 Rosecombs - blue | 17 Hamburgs - silver spangled |
| 7 Wyandottes - white | 18 Cornish - dark |
| 8 Wyandottes - black | 19 Cornish - white |
| 9 Wyandottes - buff | 20 Cornish - white laced red |
| 10 Wyandottes - partridge | 21 Antwerp Belgians |
| 11 Wyandottes - silver penciled | 22 AOV Rose Comb |

SECTION 13 – FEATHER LEGGED

- | | |
|-----------------------|------------------------------|
| 1 Cochins - buff | 9 Brahmas - light |
| 2 Cochins - partridge | 10 Brahmas - buff |
| 3 Cochins - white | 11 Silkies - white |
| 4 Cochins - blue | 12 Silkies - black |
| 5 Cochins - black | 13 Mille Fleur - non bearded |
| 6 Cochins - Barred | 14 Mille Fleur - bearded |
| 7 Cochins - Mottled | 15 Porcelain - blue |
| 8 Brahmas - dark | 16 AOV Feather Legged |

DUCKS SECTION 200

A limit of 6 Ducks or Geese per exhibitor

PREMIUMS FOR DUCKS

Premiums: 1st - \$4.00; 2nd - \$3.00; 3rd - \$2.00

AGE/SEX

1. OLD DRAKE
2. OLD DUCK

3. YOUNG DRAKE
4. YOUNG DUCK

- | | |
|------------------------------|----------------------|
| 201 Aylesbury | 210 Rouen |
| 202 Cayuga | 211 Mallard |
| 203 Crested White | 212 Blue Swedish |
| 204 Pekin | 213 Black East India |
| 205 White Call | 214 Buff |
| 206 Grey Call | 215 Khaki Campbell |
| 207 Fawn & White Ind. Runner | 216 Magpie |
| 208 White Indian Runners | 217 Muscovy |
| 209 Pencilled Runners | 218 AOV Duck |

POULTRY (continued)

GEESE SECTION 300

A limit of 6 Ducks or Geese per exhibitor

PREMIUMS FOR GEESE

Premiums: 1st - \$4.00; 2nd - \$3.00; 3rd - \$2.00

AGE/SEX

1. OLD GANDER
2. OLD GOOSE

3. YOUNG GANDER
4. YOUNG GOOSE

- | | |
|-------------------|-------------------|
| 301 Embden | 307 Buff |
| 302 Toulouse | 308 Pilgrim |
| 303 White Chinese | 309 Pomeranium |
| 304 African | 310 Brown Chinese |
| 305 Egyptian | 311 AOV Geese |
| 306 Sebastopols | |

QUAIL SECTION 400

AGE/SEX

1. COTURNIX

4. BLUE SCALE

2. NORTHERN BOBWHITE

5. GAMBLER

- (ODNR permit required)

6. ANY OTHER VARIETY

3. CALIFORNIA

Total number of Quail entries this year per exhibitor will be limited to 16 quail. Quail to be housed 2 per pen. Note you may enter 6 quail in class.

SPECIAL RULES

1. ODNR Permit (copy acceptable) must be provided and kept by check in committee. Applicable to Northern Bobwhite only.
2. Birds should have bands
3. When possible, please note the band # of the bird on the entry form
4. Feed for Quail will be furnished by the Fair

PIGEONS SECTION 500

Total number of pigeon entries this year per exhibitor will be limited to 15 pigeons. Preference will be given to a variety of breeds so we may have a better display.

Note you may enter only 6 pigeons in a class and sex.

SPECIAL RULES

1. Pigeons are to be entered as individual category as following: old hen, old cock, young hen or young cock within each breed.
2. Birds should have bands.
3. When possible, please note the band # of the bird on the entry form.
4. Feed for pigeons will be furnished by the Fair.

PREMIUMS FOR PIGEONS

\$10.00 WILL BE AWARDED FOR THE BEST PIGEON IN THE SHOW
\$5.00 AWARDED FOR EACH BEST UTILITY, BEST FLYING AND BEST FANCY

PIGEONS (continued)

AGE/SEX

1. OLD COCK
2. OLD HEN

3. YOUNG COCK
4. YOUNG HEN

501 Kings	514 Lahores
502 Mondaines	515 Fan Tail
503 Homers	516 Archangels
504 Rollers	517 Parlor
505 Tipplers	518 Jacobin
506 Helmets	519 Oriental Frill
507 Tumblers	520 Trumpeters
508 Modenas	521 Show Racers
509 Frill Backs	522 Carriers
510 Swallows	523 Priest
511 Chinese Owls	524 Dragoons
512 Nun	525 Old German
513 Pouter	526 Hungarians
514 Lahores	527 AOV: Any Other Variety

EGG SHOW - OPEN BREED SECTION 600

Chickens • Ducks • Geese • Pigeons • Eggs
Wednesday | 9:00 A.M.

(Pigeon judging immediately following Poultry judging)

EGG SHOW ENTRY RULES

1. Exhibitor must purchase an exhibitor's ticket
2. Open to all, youth and adult. Exhibitors in egg competition are NOT required to enter birds.
3. Egg entries must be produced by exhibitor's poultry.
4. Six eggs are required for each entry in Classes #1-6.
5. Exhibitor may submit two entries per class.
6. All entries must be hand delivered by the exhibitor or designee by 10 A.M. Wednesday of the Fair.
7. Once entered, all eggs become the property of CCF. Eggs are destroyed at the conclusion of the Fair.

PREMIUMS FOR THE EGG SHOW

Premiums: 1st - \$7.00; 2nd - \$5.00; 3rd - \$3.00
Rosette for the Best of Show

Classes

1. LARGE WHITE*
2. SMALL WHITE*
3. LARGE BROWN**
4. SMALL BROWN**
5. LARGE COLOR***
6. SMALL COLOR***
7. ANY SINGLE EGG****

* White classes include white and cream eggs

** Brown classes include light and dark brown eggs

*** Color classes include blues, greens, olives, plums, beiges, pinks, pastels.

**** Single egg entries can be any one chicken or other poultry egg that is beautiful, odd, unique in size, shape, color and/or appearance.

JUDGING

Eggs will be judged on shell color, shape, texture and uniformity. Speckled or mottled are entered by background color.

RABBITS & CAVIES DEPARTMENT 67

TOM SABREY

Director-At-Large for Rabbits, Cavies, Poultry, Floral,
Produce, Sheep & Swine
Contact Info: Rabbitman83@aol.com

This show is operated under the direction and care of the
CUYAHOGA COUNTY RABBIT AND CAVY BREEDERS, ASSOC.

Charles Hosta

Show Superintendent

Beth Durda

Show Secretary

JUDGING

ASHLEY SWEENEY, Rabbits
Monday - 10 a.m

THERESA SVIGEL, Cavies
Tuesday - 10 A.M.

SHOW RULES

1. This is an official American Rabbit Breeders Assoc. show and will be governed by the latest show rules of the ARBA, Inc. Filing an entry blank indicates acceptance of the same.
2. All rabbits must be permanently ear marked. Felt markers and ball point pens are not considered permanent ear marks. Cavies must be ear tagged in the left ear.
3. Animals showing signs of pregnancy are not to be entered. If an animal delivers young during the fair its owner will be asked to remove them from the fair or else receive a \$20 fine. The Cuyahoga County Fairboard cannot assume responsibility for loss or damage to livestock, however, reasonable precautions will be taken for the protection of all animals on exhibit.
4. Animals will be accepted after 2:00 P.M. on Sunday preceding the Fair. All animals need to be in place by 10:00 P.M. on Sunday, preceding the fair, unless prior arrangements are made with the Director-At-Large.
5. Animals of exhibitors from outside Cuyahoga County will be released at 7:00 P.M. while Cuyahoga County exhibitors will be released at 9:00 P.M. Sunday, the last night of the Fair. All animals must be removed from the show room by 10:00 P.M. Sunday, the last night of the Fair. Any exhibitor who removes their animals before the release time at the end of the fair will forfeit all their premiums and will be suspended from entering in future fairs, unless the animals removal is OK'd by the Director-At-Large.

RABBIT and CAVY ENTRY RULES

To exhibit, you must purchase an exhibitors ticket which includes 2 complementary gate admissions. Your exhibitor ticket permits you to exhibit in all other open class divisions in the Cuyahoga County Fair.

Entry Fees:

Single rabbit, cavy or fur class are all \$1.00 per entry

ELIGIBILITY TO EXHIBIT

Competition is open to all

Fur class must also be entered in single class and not disqualified

Animals must be owned by the exhibitor

See exhibitor rules for entry closing dates

RABBITS (continued)

Make check or money order payable to the Cuyahoga County Fair and mail your entry form to

Cuyahoga County Fair • P.O. Box 135 • Berea, Ohio 44017

Entry tags will be held for you at the Rabbit building ready for you when you bring in your entry.

RULES FOR SELLING RABBITS and CAVIES

With the exception of animals entered in wrong sex, disqualified animals are NOT allowed to be sold at the fair. Animals that have breed disqualifications may still be entered in the show but must be scratched when your entry is made, which will qualify them to be sold at the fair. When entries are turned into the fairboard, an exhibitor must include a list of animals that they plan to scratch if they are entering any animals with breed disqualifications that are being entered to be sold at the fair. Animals that are entered in the show with the intention of selling them may stay in the competition if they have no breed disqualifications, only animals with disqualifications must be scratched. It is the exhibitors responsibility to be aware of the disqualifications that apply to their animals.

Exhibitors may sell their animals for any amount they wish over the minimum price. The minimum amount for rabbits is \$20.00 and the minimum for cavies is \$15.00. Be aware that 10% of the sale price goes to the Cuyahoga County Rabbit Breeders so make sure you price your animals accordingly

**Any questions contact Tom Sabrey at:
440-759-2526 or Rabbitman83@aol.com**

NEW RULE CHANGE

There will be absolutely no changes made after the entry deadline except for ear number changes. It is the exhibitor's responsibility to know what breed, class, sex, etc. they have. The only exception made will be if the error was an office mistake and the exhibitor had originally entered the animal correctly.

**THE RABBIT BARN CLOSES AT 10:00 P.M. SUNDAY PRECEDING THE FAIR.
EXHIBITORS MUST HAVE THEIR ANIMALS COOPED BY THAT TIME.**

**AWARDS
RABBITS & CAVIES • OPEN & FUR CLASSES**

Premiums paid in each class will be related to the number of entries in each class.

Number of Entries in Class	1st	2nd	3rd	4th	5th
1	\$1.25				
2	\$1.50	1.25			
3	\$1.75	1.50	.75		
4 - 6	\$2.50	2.00	1.50	1.00	.75
7 - 14	\$3.50	3.00	2.50	2.00	1.50
15 or More	\$5.00	4.00	3.00	2.00	1.00
Largest Entry of Rabbits	\$10.00	5.00	3.00		
Largest Entry of Cavies	\$6.00	3.00	1.00		
Best Rabbit in Show, RIS, 2RIS	Trophy				
Best Cavy in Show, RIS, 2RIS	Trophy				



EARLY BIRD ENTRY FEE \$10
Postmarked by July 12, 2026

LAST DAY FOR ALL ENTRIES
July 24, 2026

RABBITS (continued)

Trophies will be awarded to the top three rabbits and cavies in the show (Best in Show, Best Reserve, 2nd Reserve). Rosettes will be awarded to all Best of Breed winners provided there are at least five in the breed.

RABBIT & CAVY SPECIAL AWARDS


Best Havana	\$3.00
Best Opposite Havana	\$2.00
Best Flemish Giant	\$3.00
Best Opposite Flemish Giant	\$2.00
Best Holland Lop	\$3.00
Best Opposite Holland Lop	\$2.00
Best Mini Lop	\$3.00
Best Opposite Mini Lop	\$2.00
Best Mini Rex	\$3.00
Best Opposite Mini Rex	\$2.00
Best Netherland Dwarf	\$3.00
Best Opposite Neth. Dwarf	\$2.00
Best French Lop	\$3.00
Best Opposite French Lop	\$2.00
Best Fuzzy Lop	\$3.00
Best Opposite Fuzzy Lop	\$2.00
Best Lionhead	\$3.00
Best Opposite Lionhead	\$2.00
Best Polish	\$3.00
Best Opposite Polish	\$2.00
Best Teddy	\$3.00
Best Opposite Teddy	\$2.00
Best American	\$2.00
Best Opposite American	\$1.00
Best White Crested	\$2.00
Best Opposite White Crested	\$1.00
Best Abyssinian	\$2.00
Best Opposite Abyssinian	\$1.00

RABBITS

Exhibitor must show breed number, class number, and ear number on Rabbit Show Entry Blank. Rabbits entered as intermediate classes where these classes are not recognized by the ARBA Standard of Perfection will be moved to the next class. Intermediate classes are permitted in six class breeds only, (check ARBA standard of perfection handbook).

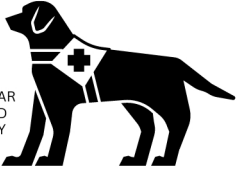
CLASS NUMBER

- | | |
|-----------------------------|----------------------------|
| 1. SENIOR BUCK | 4. INTERMEDIATE DOE |
| 2. SENIOR DOE | 5. JUNIOR BUCK |
| 3. INTERMEDIATE BUCK | 6. JUNIOR DOE |



DOGS ARE NOT PERMITTED ON THE FAIRGROUNDS UNLESS THEY ARE SERVICE DOGS. LEASHES ARE MANDATORY.

WE REQUEST THAT ALL SERVICE DOGS WEAR A VEST WHILE ON THE FAIRGROUNDS AND OWNERS KEEP A COPY OF THEIR REGISTRY ON THEIR PERSON.



RABBITS (continued)

RABBIT BREEDS AND VARIETIES

001 American - blue
002 American - white
003 American Fuzzy Lop - solid
004 American Fuzzy Lop - broken
005 American Sable
006 Angora, English - white
007 Angora, English - colored
008 Angora, French - white
009 Angora, French - colored
010 Angora, Giant
011 Angora, Satin - white
012 Angora, Satin - colored
013 Argent Brun
014 Belgian Hare
015 Beveren - black
016 Beveren - blue
017 Beveren - white
018 Britannia Petite - black
019 Britannia Petite - ruby-eyed - white
020 Britannia Petite - black otter
021 Britannia Petite - sable marten
022 Britannia Petite - chestnut agouti
023 Californian
024 Champagne D'Argent
025 Checkered Giant - black
026 Checkered Giant - blue
027 Chinchilla, American
028 Chinchilla, Giant
029 Chinchilla, Standard
030 Cinnamon
031 Creme D'Argent
032 Dutch - black
033 Dutch - blue
034 Dutch - chinchilla
035 Dutch - chocolate
036 Dutch - gray
037 Dutch - steel
038 Dutch - tortoise
039 Dutch Gold
040 Dwarf Hotot
041 Dwarf Papillon - black
042 Dwarf Papillon - blue
043 Dwarf Papillon - chocolate
044 Dwarf Papillon - lilac
045 English Angora Wool - white
046 English Angora Wool - colored
047 English Spot - black
048 English Spot - blue
049 English Spot - chocolate
050 English Spot - gold
051 English Spot - gray
052 English Spot - lilac
053 English Spot - tortoise
054 Flemish Giant - black
055 Flemish Giant - blue
056 Flemish Giant - fawn
057 Flemish Giant - light gray
058 Flemish Giant - sandy
059 Flemish Giant - steel gray
060 Flemish Giant - white
061 Florida White
062 French Angora Wool - colored
063 French Angora Wool - white
064 Harlequin - japanese
065 Harlequin - magpie
066 Havana - black
067 Havana - blue
068 Havana - broken
069 Havana - chocolate
070 Himalayan - black
071 Himalayan - blue
072 Himalayan - chocolate
073 Himalayan - lilac
074 Holland Lop - solid
075 Holland Lop - broken
076 Hotot
077 Jersey Wooly - self
078 Jersey Wooly - shaded
079 Jersey Wooly - agouti
080 Jersey Wooly - tan pattern
081 Jersey Wooly - AOV
082 Jersey Wooly - broken
083 Jersey Wooly Wool
084 Lilac
085 Lionhead - black
086 Lionhead - chocolate
087 Lionhead - seal
088 Lionhead - REW
089 Lionhead - siamese sable
090 Lionhead - tortoise
091 Lop, English - solid
092 Lop, English - broken
093 Lop, French - solid
094 Lop, French - broken
095 Lop, Mini - solid
096 Lop, Mini - broken
097 Mini Rex - black
098 Mini Rex - blue
099 Mini Rex - broken
100 Mini Rex - castor
101 Mini Rex - chinchilla
102 Mini Rex - chocolate
103 Mini Rex - himalayan
104 Mini Rex - lilac
105 Mini Rex - lynx
106 Mini Rex - opal
107 Mini Rex - otter
108 Mini Rex - red
109 Mini Rex - seal
110 Mini Rex - tortoise
111 Mini Rex - white
112 Mini Satin - black
113 Mini Satin - blue
114 Mini Satin - broken
115 Mini Satin - chinchilla
116 Mini Satin - chocolate
117 Mini Satin - chocolate agouti
118 Mini Satin - copper
119 Mini Satin - himalayan
120 Mini Satin - opal
121 Mini Satin - Otter
122 Mini Satin - red
123 Mini Satin - siamese
124 Mini Satin - silver marten
125 Mini Satin - squirrel
126 Mini Satin - tort

RABBITS (continued)

127 Mini Satin - white
128 Netherland Dwarf -
ruby-eyed-white
129 Netherland Dwarf - black
130 Netherland Dwarf - blue
131 Netherland Dwarf - broken
132 Netherland Dwarf - chocolate
133 Netherland Dwarf - lilac
134 Netherland Dwarf - siam smoke
pearl
135 Netherland Dwarf -
sable point
136 Netherland Dwarf - siamese sable
137 Netherland Dwarf - chestnut
138 Netherland Dwarf - opal
139 Netherland Dwarf - lynx
140 Netherland Dwarf - chinchilla
141 Netherland Dwarf - squirrel
142 Netherland Dwarf - tan
143 Netherland Dwarf -
silver marten
144 Netherland Dwarf -
sable marten
145 Netherland Dwarf -
smoke pearl marten
146 Netherland Dwarf - otter
147 Netherland Dwarf - himalayan
148 Netherland Dwarf - orange
149 Netherland Dwarf - fawn
150 Netherland Dwarf - tortoise
shell
151 Netherland Dwarf - steel
152 New Zealand - black
153 New Zealand - broken
154 New Zealand - red
155 New Zealand - white
156 Normal Fur - white
157 Normal Fur - colored
158 Palomino - golden
159 Palomino - lynx
160 Polish - black
161 Polish - blue
162 Polish - blue-eyed-white
163 Polish - broken
164 Polish - chocolate
165 Polish - ruby-eyed white
166 Rex - black
167 Rex - blue
168 Rex - broken
169 Rex - Californian
170 Rex - castor
171 Rex - chinchilla
172 Rex - chocolate
173 Rex - lilac
174 Rex - lynx
175 Rex - opal
176 Rex - black otter
177 Rex - red
178 Rex - sable
179 Rex - seal
180 Rex - white
181 Rex Fur - colored
182 Rex Fur - white
183 Rhinelander - black
184 Rhinelander - blue
185 Satin - black
186 Satin - blue
187 Satin - broken
188 Satin - californian
189 Satin - chinchilla
190 Satin - chocolate
191 Satin - copper
192 Satin - otter
193 Satin - red
194 Satin - siamese
195 Satin - white
196 Satin Fur - colored
197 Satin Fur - white
198 Silver - black
199 Silver - brown
200 Silver - fawn
201 Silver Fox
202 Silver Marten - black
203 Silver Marten - blue
204 Silver Marten - chocolate
205 Silver Marten - sable
206 Tan - black
207 Tan - blue
208 Tan - chocolate
209 Tan - lilac
210 Thrianta
211 Velvet Lop - broken
212 Velvet Lop - solid

**IF YOU DO NOT SEE YOUR BREED OR VARIETY LISTED, CONTACT
THE DIRECTOR-AT-LARGE, TOM SABREY
AT 440-759-2526.**

THE BREEDS LISTED BELOW ARE 4 CLASS BREEDS. THEY MAY BE ENTERED IN SENIOR AND JUNIOR CLASSES ONLY

American Fuzzy Lop, American Sable, English Angora, French Angora, Satin Angora, Belgian Hare, Britannia Petite, Standard Chinchilla, Dutch, Dwarf Hotot, English Spot, Florida White, Harlequin, Havana, Himalayan, Holland Lop, Jersey Wooly, Lilac, Mini Lop, Mini Rex, Mini Satin, Netherland, Dwarf, Polish, Rhinelander, Silver, Silver Marten, Tan, Thrianta

THE BREEDS LISTED BELOW ARE 6 CLASS BREEDS, THEY MAY BE ENTERED IN SENIOR, INTERMEDIATE AND JUNIOR CLASSES

American, Giant Angora, Beveren, Californian, Champagne d'Argent, Checkered Giant, American Chinchilla, Giant Chinchilla, Cinnamon, Crème d'Argent, Flemish Giant, Hotot, English Lop, French Lop, New Zealand, Palomino, Rex, Satin, Silver Fox

CAVIES

Exhibitor must show BREED NUMBER, CLASS NUMBER & EAR NUMBER on entry blank

CLASS NUMBER

- | | |
|----------------------|---------------------|
| 1. SENIOR BOAR | 4. INTERMEDIATE SOW |
| 2. SENIOR SOW | 5. JUNIOR BOAR |
| 3. INTERMEDIATE BOAR | 6. JUNIOR SOW |

AMERICAN

- | | |
|---|---|
| 200 American - Any Other Self (Beige, Chocolate, Gold Lilac, Red-Eyed Orange, Blue) | 216 American - Silver Agouti |
| 201 American - Black | 217 American - Any Other Marked (Broken Color, Tortoise Shell) |
| 204 American - Cream | 218 American - Dalmation |
| 207 American - Red | 219 American - Dutch |
| 208 American - White | 220 American - Himalayan |
| 209 American - Brindle | 221 American - Tortoise Shell & White |
| 210 American - Solid Dilute | 222 American - Tan Pattern (Tan (all colors), Silver Marten (all colors)) |
| 211 American - Solid Golden | 223 Cal Pattern |
| 212 American - Roan | 224 Otter (all colors) |
| 213 American - Solid Silver | |
| 214 American - Dilute Agouti | |
| 215 American - Golden Agouti | |

ABYSSINIAN

- | | |
|--|--|
| 226 Abyssinian - Self (Beige, Black, Chocolate, Cream, Lilac, Red, Red-Eyed Orange, White, Blue) | 242 Brindle Aby |
| 239 Abyssinian - Any Other Solid (Solid Dilute, Solid Silver, Solid Golden) | 243 Abyssinian - Marked (Broken Color, Tortoise Shell, Dalmation, Dutch, Himalayan, TSW) |
| 240 Abyssinian - Agouti (Dilute Agouti, Golden Agouti, Silver Agouti) | 244 Tan Pattern |
| 241 Roan Aby | 245 Cal Pattern |

PERUVIAN

- | | |
|--|-----------------|
| 251 Peruvian - Self (Beige, Black, Chocolate, Cream, Lilac, Red, Red-Eyed Orange, White, Blue) | 275 Cal Pattern |
| 265 Peruvian - Agouti (Dilute Agouti, Golden Agouti, Silver Agouti) | |
| 268 Peruvian - Broken Color | |
| 269 Peruvian - Any Other Marked (Dalmation, Dutch, Himalayan, Tortoise Shell, Brindle, Roan, Solids) | |
| 273 Tortoise Shell & White | |
| 274 Tan Pattern | |

AMERICAN SATIN

- | | |
|---|---|
| 279 Any Other Self- (Beige, Black, Chocolate, Lilac, Red-Eyed Orange, Blue) | 290 American Satin - Agouti (Dilute Agouti, Golden Agouti, Silver Agouti) |
| 280 American Satin - Cream | 293 American Satin - Marked Group A (Broken Color, Tortoise Shell) |
| 283 American Satin - Red | 298 American Satin - Marked Group B (Dalmation, Dutch, Himalayan, Tortoise Shell & White) |
| 284 American Satin - White | 299 Tan Pattern |
| 285 American Satin - Intermixed Solids (Brindle, Roan) | 300 Californian Cal Pattern |
| 286 American Satin - Ticked Solids (Solid Dilute, Solid Silver, Solid Golden) | |

CAVIES (continued)

SILKIE

- | | |
|--|-----------------|
| 301 Silkie - Self (Beige, Black, Chocolate, Cream, Lilac, Red, Red-Eyed Orange, White, Blue) | 324 Tan Pattern |
| | 325 Cal Pattern |
| 315 Silkie - Agouti (Dilute Agouti, Golden Agouti, Silver Agouti) | |
| 318 Silkie - Broken Color | |
| 319 Silkie - Any Other Marked (Dalmation, Dutch, Himalayan, Tortoise Shell, Brindle, Roan, Solid Dilute, Solid Silver, Solid Golden) | |
| 323 Silkie - Tortoise Shell & White | |

TEDDY

- | | |
|---|--|
| 326 Teddy - Self (Beige, Black, Chocolate, Cream, Lilac, Red, Red-Eyed Orange, White, Blue) | 348 Teddy - Tortoise Shell & White |
| 335 Teddy - Intermixed Solids (Brindle, Roan) | 349 Tan Pattern (Beige, Black, Blue, Chocolate, Lilac, Silver Martens, Otter-all colors) |
| 336 Teddy - Ticked Solids (Solid Dilute, Solid Silver, Solid Golden) | 350 Cal Pattern |
| 340 Teddy - Agouti (Dilute Agouti, Golden Agouti, Silver Agouti) | |
| 343 Teddy - Broken Color | |
| 344 Teddy - Any Other Marked (Dalmation, Dutch, Himalayan, Tortoise Shell) | |

WHITE CRESTED

- | | |
|--|--|
| 351 Any Other Self (Beige, Chocolate, Cream, Lilac, Red-Eyed Orange, Blue) | 366 White Crested - Marked (Broken Color (no white allowed), Tortoise Shell) |
| 352 Black | 367 Tan Pattern |
| 358 White Crested - Red | 368 Cal Pattern |
| 359 White Crested - Brindle | |
| 360 White Crested - Any Other Solid (Solid Dilute, Solid Golden, Solid Silver) | |
| 363 White Crested - Agouti (Dilute Agouti, Golden Agouti, Solid Agouti) | |

ABYSSINIAN SATIN

- | | |
|--|---|
| 371 Abyssinian Satin - Self (Beige, Black, Chocolate, Cream, Lilac, Red, Red-Eyed Orange, White, Blue) | 389 Abyssinian Satin - Any Other Solid (Solid Dilute, Solid Silver, Solid Golden) |
| 380 Abyssinian Satin - Solid Group (Brindle) | 390 Tan Pattern |
| 381 Abyssinian Satin - Roan | 391 Cal Pattern |
| 385 Abyssinian Satin - Agouti (Dilute Agouti, Golden Agouti, Silver Agouti) | |
| 388 Abyssinian Satin - Marked (Broken Color, Tortoise Shell, Dalmation, Dutch, Himalayan, TSW) | |

PERUVIAN SATIN

- | | |
|---|---|
| 396 Peruvian Satin - Self (Beige, Black, Chocolate, Cream, Lilac, Red, Red-Eyed Orange, White, Blue) | 418 Peruvian Satin - Tortoise Shell & White |
| 410 Peruvian Satin - Agouti (Dilute Agouti, Golden Agouti, Silver Agouti) | 419 Tan Pattern |
| 413 Peruvian Satin - Broken Color | 420 Cal Pattern |
| 414 Peruvian Satin - Any Other Variety (Dalmation, Dutch, Himalayan, Tortoise Shell, Brindle, Roan, Solid Dilute, Solid Silver, Solid Golden) | |

CAVIES (continued)

SILKIE SATIN

421	Silkie Satin - Self (Beige, Black, Chocolate, Cream, Lilac, Red, Red-Eyed Orange, White, Blue)	White	444	Tan Pattern
435	Silkie Satin - Agouti (Dilute Agouti, Golden Agouti, Silver Agouti)		445	Cal Pattern
438	Silkie Satin - Broken Color			
439	Silkie Satin - Any Other Variety (Dalmation, Dutch, Himalayan, Tortoise Shell, Solid Dilute, Solid Silver, Solid Golden)			
443	Silkie Satin - Tortoise Shell &			

TEDDY SATIN

446	Teddy Satin - Self (Beige, Black, Chocolate, Cream, Lilac, Red, Red-Eyed Orange, White, Blue)	468	Teddy Satin - Tortoise Shell & White
455	Teddy Satin - Solid (Brindle, Roan, Solid Dilute, Solid Golden, Solid Silver)	469	Tan Pattern
460	Teddy Satin - Agouti (Dilute Agouti, Golden Agouti, Silver Agouti)	470	Cal Pattern
463	Teddy Satin - Broken Color		
464	Teddy Satin - Any Other Marked (Dalmation, Dutch, Himalayan, Tortoise Shell)		

CORONET

471	Coronet - Self (Beige, Black, Chocolate, Cream, Lilac, Red, Red-Eyed Orange, White, Blue)	493	Coronet - Tortoise Shell & White
485	Coronet - Agouti (Dilute Agouti, Golden Agouti, Silver Agouti)	494	Tan Pattern
488	Coronet - Broken Color	495	Cal Pattern
489	Coronet - Any Other Variety (Dalmation, Dutch, Himalayan, Tortoise Shell, Solid Dilute, Solid Silver, Solid Golden)		

TEXEL

496	Texel - Self (Beige, Black, Chocolate, Cream, Lilac, Red, Red-Eyed Orange, White, Blue)	518	Texel - Tortoise Shell & White
510	Texel - Agouti (Dilute Agouti, Golden Agouti, Silver Agouti)	519	Tan Pattern
513	Texel - Broken Color	520	Cal Pattern
514	Texel - Any Other Variety (Dalmation, Dutch, Himalayan, Tortoise Shell, Solid Dilute, Solid Silver, Solid Golden)		

NEW FORMAT FOR ENTERING CAVIES

Cavy exhibitors please make sure you have the correct class numbers for your cavies. Many classes have now been grouped together to coincide with the ARBA standard for cavy classes and many of the old class numbers that we have used in the past have been eliminated from this catalog.

SHEEP DEPARTMENT 73

TOM SABREY

Director-At-Large for Rabbits, Cavies, Poultry, Floral, Produce, Sheep & Swine
Contact Info: Rabbitman83@aol.com

John Durda

Superintendent

JUDGING

Wednesday • 12 P.M.

RULES

1. To exhibit you must purchase an exhibitor's ticket. Your one exhibitor ticket permits you to exhibit in all other open class divisions and/or departments of the Cuyahoga County Fair.
2. Entry Fee: 10% of the First Premium, per class.
3. Eligibility To Exhibit:
 - a. Competition is open to all.
 - b. The Exhibitor must be the owner of the animals exhibited.
 - c. Each animal must comply with the "Inspection and Health Requirements of Livestock Exhibited in Ohio" printed in this book.
 - d. The Exhibitor must present Registration Certificates upon request of the Director-At-Large in Charge.
4. Please specify the minimum number of pens required on your Entry Form. Entries will be accepted, as received, to the limit of space available. Pens are designed to hold 3 large sheep or 4 small sheep. Pens will be assigned before arrival.
5. All single entries must be shown to qualify for group classes.
6. All sheep must have a scrapies ID tag. Tag numbers are to be turned in to the Sheep Superintendent upon entering the sheep barn.
7. See exhibitor rules for entry deadline. Mail your Entry Form and make checks or money orders payable to:
Cuyahoga County Fair • P.O. Box 135 • Berea, Ohio 44017
8. Animals must be in their pens before 12:00 Noon on Tuesday, opening day of the Fair. They will be received on the previous Sunday. No animal may be removed from the Fair before 7:00 P.M. on the last day of the Fair.
9. No bedding will be furnished. All pens and aisles must be cleaned before 10:00 A.M. each day.
10. The entry requirements of the Cuyahoga County Fair apply to this department.
11. Exhibitors need not be present all week. Staff will be happy to feed animals for you.

SHEEP BREEDS SECTIONS

- | | | |
|---------------|----------------|--------------------|
| 1. CHEVIOT | 6. MERINO | 11. SOUTHDOWN |
| 2. COLUMBIA | 7. KATHADIN | 12. SUFFOLK |
| 3. CORRIEDALE | 8. OXFORD | 13. COLOR SHEEP |
| 4. DORSET | 9. LINCOLN | 14. AOB MEAT SHEEP |
| 5. HAMPSHIRE | 10. SHROPSHIRE | 15. AOB WOOL SHEEP |
| | | 16. HORNED DORSET |

SHEEP (continued)

\$2.00 PER HEAD WILL BE PAID FOR EACH SHEEP SHOWN.

Premiums: 1st - \$13.00; 2nd - \$11.00; 3rd - \$8.00; 4th - \$7.00; 5th - \$6.00

Class

1. Ram over one year and under 2
2. Ram Lamb under one year
3. 2 Ram Lambs (Pair)
4. Ewe over 1 year and under 2
5. 2 Yearling Ewes (Pair)
6. Ewe Lamb under 1 year
7. 2 Ewe Lambs (Pair)
8. Pen of Lambs, 2 ram lambs and 2 ewe lambs born within the year
9. Breeder's Young Flock, yearling or ram lamb, 2 yearling ewes, 2 ewe lambs
10. Champion Ram \$25.00 & Rosette
11. Champion Ewe \$25.00 & Rosette
12. Supreme Champion Ram (Over All Breeds) \$50.00 & Rosette
13. Supreme Champion Ewe (Over All Breeds) \$50.00 & Rosette

**Sheep Showmanship Exhibitors Friday 4:00P.M.
Rosettes 1st - 5th place**



NOVEMBER 7-8, 2026
DECEMBER 5-6, 2026
JANUARY 2-3, 2027
FEBRUARY 6-7, 2027
MARCH 6-7, 2027

FAIR VENDORS DEPARTMENT

A very important part of any family oriented event is the FAIR VENDORS Department. The Cuyahoga County Fair is no exception. For over 120 years we have prided ourselves on having the best commercial displays, most challenging games of skill and the highest quality and diversified food vendors available. If you qualify and are interested in contracting space in one of the best-organized and successful summer events in the Northern Ohio area, contact the Fair Office for further information.

Office hours are Mondays, Wednesdays, and Fridays from 10:00 A.M. to 3:00 P.M. year-round.

OFFICE VOICE: (440) 243-0090 X112

FAX: (440) 243-0344

CONCESSIONS@CUYFAIR.COM

or contact through the Website at
www.cuyfair.com/vendorsapplication

SWINE DEPARTMENT 74

TOM SABREY

Director-At-Large for Rabbits, Cavies, Poultry, Floral,
Produce, Sheep & Swine

Contact Info: Rabbitman83@aol.com

JUDGING

Saturday • 12 P.M. Swine Arena in Sheep Barn

ENTRY FEE: \$5.00 PER PEN

PREMIUMS IN EACH CLASS

1st - \$20.00; 2nd - \$15.00; 3rd - \$10.00; 4th - \$5.00
Champion Rosette \$25.00 | Reserve Champion \$20.00

SWINE ENTRY RULES

See Exhibitor Rules for entry deadline or until all stall space is full.

1. To exhibit, you must purchase an exhibitor ticket which includes 2 complimentary gate admissions. The exhibitor ticket allows entry in all open class Divisions.
2. The entry fee is \$5 per entry. The entry fees are non-refundable and non-transferable. See exhibitor rules for entry deadline. Mail your Entry Form and make checks or money orders payable to:
Cuyahoga County Fair • P.O. Box 135 • Berea, Ohio 44017.
3. Animals must be in their pens by 11 A.M. on Thursday, August 13.
4. Exhibitors must furnish their own bedding (straw or wood shavings).
5. All Junior Fair animals must be entered under the Junior Fair exhibitors name.
6. Gilts entered in the market swine division may be double entered in the breeding swine division. A separate entry fee and form must be submitted with the age and breed of each gilt for each division. Entry fees are non-refundable.
7. Exhibitors may not place any obstructions in the aisle and must keep the aisle clean.
8. Exhibitors must be at least 5 years old. Boar exhibitors must be at least 15 years old.
9. All animals must be exhibited in the show ring and judged even in the absence of competition in order to be awarded premiums.
10. No feral hogs allowed. Exhibitors must be able to control hogs in the show ring to receive premium money.
11. Exhibitors must abide by the Fair rules and regulations.
12. The Director-At-Large in Charge reserves the right to have any animal removed from the barn or show ring if the animal is unruly or unmanageable.
13. Grooming Requirements: Non oil based products only, water is preferred, any oil, paint or powder will not be permitted.
14. Hair length must be at least a measurable 1/2 inch including the underline. Ears and tails may be shorter in length. Any hog may be checked for hair length at entry or during the show. Any hog in violation of the grooming requirements may be disqualified.



EARLY BIRD ENTRY FEE \$10
Postmarked by July 12, 2026

LAST DAY FOR ALL ENTRIES
July 24, 2026

SWINE (continued)

15. Tampering and misrepresentation or any other irregularity in exhibiting or showing will be considered fraud and deception. Any exhibitor whose animal gives evidence of fraud and deception will be barred from competition.
16. The Director-At-Large in Charge reserves the right to interpret all rules and regulations governing the show and to make such decisions as necessary for the successful conduct of the show. Such interpretations and decisions will be final.
17. All swine may be subject to inspection by official fair veterinarian at time of entrance to the grounds. The management reserves the right to take any measures to protect the health of swine shown at the fair. Director-At-Large has the right to refuse any entry.
18. Each animal must comply with the Inspection and Health Requirements of Livestock Exhibited in Ohio as per the Ohio Department of Agriculture, printed in this book.
19. The decision of the judge is final.
20. All livestock must be removed by 11:00 p.m. on the final day of the Fair.

No registration papers will be required, breeds will show by breed characteristics.

BREED SHOW CLASSIFICATION GUIDELINES FOR BREED DIVISIONS

BERKSHIRE: The general color shall be black and white points, appearing on the nose, feet and tail (an occasional splash of white may appear on the body). 1. Black and white animals with erect ears, exhibiting Berkshire characteristics. 2. A Berkshire must have white on all four legs, face and tail (unless tail is docked). 3. Must have ear notches, ear-tags or tattoos with premise numbers in their ears. 4. A Berkshire must NOT have a solid white or a solid black face from the ears forward. 5. White is allowed on the ears, but NO solid white ears. 6. An occasional splash of white may appear on the body. **INELIGIBLE** 1. Any color present on the animal other than white or black. 2. Rounded and heavily drooped ears. 3. Formation of a belt encompassing one-third of the front part of the body. Excessive white on the body, more than 25%.

DUROC: Red in color 1. Must be red in color and possess Duroc Breed characteristics. 2. Ears must be down and medium size. 3. Must have ear notches, ear-tags or tattoos with premise numbers in their ears. 4. Must NOT have any white hair located on the animal. 5. Must NOT have more than three (3) black spots on the skin and none of these spots can be larger than two inches in diameter. 6. Must NOT have any shading or indication of belt. **INELIGIBLE** 1. White feet or white hair located directly above the feet of the animal. (Commonly referred to as white socks.) 2. White spots or white hair located anywhere else on the animal's body not mentioned in the above wording. 3. Black spots larger than two inches in diameter located anywhere on the body. 4. Excessive dark or black pigment located anywhere on the body. Larger-dark colored patches of skin or obvious markings of a belt on the forefront of the animal.

HAMPSHIRE: Black in color with a white belt over the forefront of the animal's body, encircling both front legs. Only if registration papers are provided a solid black or misbelted Hampshire will be accepted in this class. 1. Must possess Hampshire Breed characteristics. 2. Ear must be erect. 3. Must have ear notches, ear-tags or tattoos with premise numbers in their ears. 4. Must NOT have any white hair or indications of streaking on the forehead. 5. Must not have any red hair. **INELIGIBLE** 1. Any color hair other than black or white (red, sandy, etc.) 2. White extending over the brim of the nose or above the rear hock on any part of the body. 2. Any non-white pigmentation larger than a quarter or several small areas of pigmentation (masking around the forehead, total color spots cannot be larger than a silver dollar)

ALL CROSSBREDS AND AOB: 1. All hogs that cannot fit the classifications of Breed division entries. 2. Must have ear notch, ear-tag or tattoos with Premises number in their ear. 3. AOBs must adhere to the national registration breed standards.

SWINE SECTIONS

- | | |
|-----------------|---------------------------------|
| 1. BERKSHIRE | 7. BLACK AOB (all other breeds) |
| 2. DUROC | 8. RED AOB |
| 3. HAMPSHIRE | 9. WHITE AOB |
| 4. YORKSHIRE | 10. CROSSBRED |
| 5. SPOTTED | |
| 6. POLAND CHINA | |

SWINE PREMIUMS

\$2.00 per head will be paid for each pig shown
1st - \$25.00; 2nd - \$20.00; 3rd - \$10.00; 4th - \$5.00, 5th - \$3.00
Champion \$25.00 & Rosette, Reserve Champion \$20.00 & Rosette
Supreme Champion Boar \$50 and Banner (all champion boar compete)
Supreme Champion Female \$50 and Banner (all champion gilts & sows compete)
Supreme Champion Market Swine \$50 and Banner
(all champion feeder pigs and market hogs compete)

Classes

1. Jr. Breeding Gilt (7 months and under)
2. Sr. Breeding Gilt (8-12 months)
3. Sow (over 12 months)
4. Jr. Boar (7 months and under)
5. Sr. Boar (8 months and under)
6. Feeder Pig (40-200#)
7. Market Hog (201-330#)
8. Pent of Two

*Market hogs and Feeder pigs will show on declared weight, they will not be weighed prior to show.

SWINE SHOWMANSHIP

SWINE PREMIUMS

No Cash Awards - Rosettes Only

Classes

1. Adult Showmanship: 19 years and older
2. Youth Showmanship: 10 to 18 years
3. PeeWee Showmanship: 6 to 9 years



Middleburg Heights Historical Society



Stay up to date with Historical Society events and information by following us on Facebook!



Email: mhhistoricalociety@yahoo.com

Wonderful Winter



SHOPS

Cuyahoga County Fairgrounds

December
12 & 13,
2026

**BE SURE TO VISIT THE
ANIMAL BARN &
EXHIBITS**



DURING THIS YEAR'S 2026 FAIR

\$5 FAIR ADMISSION

FOR KIDS, VETS & SENIORS

Tuesday, August 11th ONLY

For Kids 3 to 12, Veterans (with ID) and Seniors (60 and over)

GENERAL ADMISSION: \$10 • RIDE TICKETS SEPARATE

CHILDREN 2 AND UNDER & ACTIVE MILITARY (WITH ID) ARE FREE EVERY DAY!

NEW!

CCF T-SHIRTS



\$20 EACH

ON SALE NOW IN THE FAIR OFFICE

164 EASTLAND ROAD IN BERA • WWW.CUYFAIR.COM

BEREA FLEA Market!

EVERY SATURDAY & SUNDAY
OUTSIDE AT THE CUYAHOGA COUNTY FAIRGROUNDS

OPENS 6AM 'TIL 1 PM FOR ALL
PUBLIC ADMISSION \$1 • OVER 200 VENDORS

VENDORS

Saturday \$7 • Sunday \$14

25 ft. frontage • Setup starts as early as 6am



For more Info Call:

440-305-0061 - Cell 440-243-0090 - Office

Join Us!

Get your Cuyahoga County Agricultural Society membership today! To become a member, visit the Fairboard Office and purchase your membership for \$25 per person. Please note that you must be at least 18 years old and a resident of Cuyahoga County to join. As a member, you'll enjoy reduced fees for special programs and can cast your vote in the annual election in October. Don't wait - the final day to purchase your membership is August 16th, which is the last day of the fair.

Remember to bring ID and proof of age and address with you.



To become a candidate for director-At-Large you must be 21 years of age and have a valid membership and fill out the application.



It's Electric!

Experience the power of the wind through our 262 foot tall, 500 kW Wind Turbine.

Our 2,000 sq. ft. Sustainability Center is full of energy efficient elements such as lighting, sensors, solar tubes and solar attic fans, not to mention numerous construction materials such as high R value insulation, insulated concrete slab floors and a state of the art heating and cooling system. We also offer a small classroom that can be reserved for organizational, educational and community meetings. Our classroom seats 40 people theater style, or 25 people at tables and the entire building is wireless.

Visit Today

A Wind Energy Curriculum and assisted instruction is available on site. Design and build a renewable energy device to take home as a part of a visit.

Please note: The instructional lessons, make and take renewable energy projects and tours **MUST** be scheduled ahead of time. A fee may be charged to cover the cost of the project materials.

School and educational tours may be divided into three sections and rotated through the Sustainability Center, Solar Fountain and a Turbine Walk depending on the number of participants. Students must be accompanied by certified teachers and/or adult chaperones.

Tours must be scheduled and available dates fill up quickly. Please call the Fairboard Office,

440-243-0090 x100
for details and to schedule your tour.

DIRECTORS-AT-LARGE

Cuyahoga County Agricultural Society



Carl Cooley
President
North Olmsted



Larry Theurer
Vice-President
Cleveland



Gail Royak-Wind
Treasurer
Brook Park



Joanne Scudder
Secretary
Brecksville



Diane Barton
Parma



Jeff Collins
Bay Village
North Royalton



Dennis Eck
Strongsville



Jordyn Dickson
Bedford



Holly Everhart
Berea



Tim Fowler
North Royalton



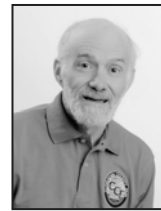
James Lewandowski
Parma



Tom Sabrey
Strongsville



Bob Sculac
Olmsted Falls



James Shea Jr.
Olmsted Falls

STAFF				
	Susan Bachie Bookkeeper	Barry Pettit Maintenance	Jacqueline Kinder Office Administrator	Pat Surak Office Assistant

Cuyahoga County Agricultural Society Mission Statement

“To exhibit, to educate and to demonstrate agribusiness products and techniques from the past, present and future in a festive atmosphere for all generations.”

YOUR COUNTY OFFICIALS SALUTE THE 128TH CUYAHOGA COUNTY FAIR & EXPOSITION

Chris Ronayne,
County Executive

Dale Miller,
Council President

Yvonne M. Conwell,
Council Vice-President

Council Members

Patrick Kelly Martin J. Sweeney Mark Casselberry Michael J. Gallagher Robert E. Schleper, Jr.
Pernel Jones, Jr. Meredith M. Turner Michael J. Houser, Sr. Sunny M. Simon

Exhibitor # _____

Processed By: _____

Entered By: _____

Exhibitors Entry Form For
**BEEF & DAIRY CATTLE, DRAFT HORSES,
 DRAFT PONIES, GOATS, SHEEP, SWINE**

Cuyahoga County Fair | PO Box 135 | Berea, OH 44017
 Phone: 440-243-0090 | Fax: 440-243-0344

FAIR DATES: AUGUST 11-16, 2026 | PHYSICAL ENTRIES ENTRIES CLOSE: AUGUST 7, 2026
ANIMAL ENTRIES CANNOT BE ENTERED ONLINE

Name _____ Cell _____
 Farm/Stable _____ Phone _____
 Address _____ E-Mail _____
 City _____ State _____ Zip _____

LN. NO.	DEPT. NO.	BREED/ SEC. NO.	CLASS NO.	SEX	NAME	REGISTRY NO.	DATE OF BIRTH	ENTRY FEE
1								
2								
3								
4								
5								
6								
7								

NOTE: Please refer to to the Premium Book for Exhibitor Entry Requirements. | Use reverse side of this form for additional entries.
 Unclaimed items will be donated to charity 7 days after the the close of the Fair.

ENTER ONLINE AT: WWW.CUYFAIR.COM • THIS FORM MY BE DUPLICATED AS NEEDED

EXHIBITOR FEE:

Early Entry : \$10.00
(Includes 2 Admissions)

Regular Entry : \$15.00
(Includes 2 Admissions)

PLEASE INDICATE TOTAL NUMBER OF ENTRIES

Make Check Payable to: Cuyahoga County Fair or Provide CC Info Below

NUMBER	TYPE OF LIVESTOCK	AMOUNT
	<i>Beef Cattle</i>	
	<i>Dairy Cattle</i>	
	<i>Draft Horses</i>	
	<i>Draft Ponies</i>	
	<i>Dairy Goats</i>	
	<i>Meat Goats</i>	
	<i>Sheep</i>	
	<i>Swine</i>	
TOTAL AMOUNT DUE = ENTRY FEE + ANIMAL FEE		

Please Note: Your signature on this document indicates acceptance of all rules and regulations governing stall or pen assignments and exhibitor conduct as set forth by the Cuyahoga County Agricultural Society and the Director-At-Large of each livestock department.

Signature: _____

Date: _____

The Cuyahoga County Fairboard and Cuyahoga County Agricultural Society assume no responsibility for livestock and/or articles exhibited, entered and/or shown upon the Cuyahoga County Fairgrounds. Exhibitor/Entrant specifically acknowledges his/her awareness that livestock and exhibition articles are placed upon and maintained upon the Cuyahoga County Fairgrounds by them at their sole risk. Further, entrant/exhibitor agrees to hold the Cuyahoga County Agricultural Society and the Cuyahoga County Fairboard harmless from any and all claims to or resulting from their respective livestock and/or exhibits from any cause whatsoever. The aforesaid indemnification shall include injuries to the person or property of third parties resulting from the aforesaid livestock and/or exhibition articles. The Cuyahoga County Fairboard assumes no responsibility for errors or omissions in the foregoing booklet.

CREDIT CARD: VISA MC DISC AMEX | CARD # _____

EXP. _____ CVV _____

MUST BE SIGNED BY PARENT/GUARDIAN IF UNDER 18 - SEE PG 46

EXHIBITOR (PRINT) _____

FOR/BY _____

EXHIBITOR/ENTRANT _____

DATE _____



BEEF & DAIRY CATTLE, DRAFT HORSES & PONIES, GOATS & SHEEP - CUYAHOGA COUNTY FAIR

LN. NO.	DEPT. NO.	BREED/ SEC. NO.	CLASS NO.	SEX	NAME	REGISTRY NO.	DATE OF BIRTH	ENTRY FEE
8								
9								
10								
11								
12								
13								
14								
15								
16								
17								
18								
19								
20								
21								
22								
23								
24								
25								
26								
27								
28								
29								
30								
31								

Note: Complete if Separate Page.

Name _____ Phone _____ Cell _____

Address _____ City _____ State ____ Zip _____

Email _____

THIS FORM MAY BE DUPLICATED AS NEEDED!

Exhibitor # _____

Processed By: _____

Entered By: _____

Exhibitors Entry Form For **CANINE SHOWMANSHIP**

Cuyahoga County Fair | PO Box 135 | Berea, OH 44017

Phone: 440-243-0090 | Fax: 440-243-0344

FAIR DATES: AUGUST 11-16, 2026 | PHYSICAL ENTRIES ENTRIES CLOSE: JULY 24 2026
ANIMAL ENTRIES CANNOT BE ENTERED ONLINE

Name _____ Phone _____

Address _____ E-Mail _____

City _____ State _____ Zip _____

Are you at least 18 years old? YES NO If no, how old are you? _____

Children under 18 years of age must have registration form completed and signed by parent or legal guardian.

4H Member? YES NO Club _____

DOG INFORMATION

Name _____ Breed or Mix _____

Age _____ Male Female

REGISTRATION FOR CLASSES IS ON PAGE 30

WAIVER AND PARTICIPATION RELEASE

By signing below, I agree and understand that Cuyahoga County Agricultural Society (CCAS), its Board and Members, and the Cuyahoga County Council and Executives, shall not be or become liable or responsible for any loss, injury, death, or damages to any person or property arising out of or in connection with the Cuyahoga County Fair (CCF) Dog Show. I understand that CCAS and CCF reserve the right to order the removal of any dog for unruly behavior. I have also read, understand and agree to comply with the rules and regulations set forth by CCF attached to this form.

I hereby give my consent, allowing _____ (pet's name) and my minor child, _____ to participate in the Cuyahoga County Fair Dog Show on _____. I agree and understand that any photographs taken while attending the event may be used for marketing and promotional purposes. I also warrant and guarantee that I am the owner of _____ (pet's name), and am legally entitled to give such permission. I have read and agree to all dog show and park rules and regulations.

Signature of Owner

Date

Signature of Owner Parent/Guardian (if under 18 years old)

Date

Please make check or money order payable to "Cuyahoga County Agricultural Society"
Send check and registration to:

CCF Dog Show • PO Box 135 • Berea, OH 44017

GO TO PAGE 30 FOR PAYMENT AND TO REGISTER CLASSES

THIS FORM MAY BE DUPLICATED AS NEEDED!

CANINE SHOWMANSHIP CLASS REGISTRATION - CUYAHOGA COUNTY FAIR



LN NO.	DEPT. NO.	SEC. NO.	CLASS NO.	NO. OF ENTRIES	DESCRIPTION OF ENTRY AS WRITTEN IN PREMIUM BOOK	SHOW	
						1ST	2ND
1							
2							
3							
4							
5							
6							
7							
8							
9							
10							
11							
12							
13							
14							
15							
16							
17							
18							
19							
20							

GO TO PAGE 29 TO FILL OUT DOG INFO AND WAIVERS

Note: Please Refer to the Premium Book for Exhibitor Entry Requirements
 Make checks Payable to: *Cuyahoga County Fair*

CREDIT CARD: VISA MC DISC AMEX
 CARD # _____
 EXP. _____ CVV _____
 SIGNATURE: _____

TOTAL NO. OF ENTRIES	
TOTAL CANINE ENTRY FEES <small>(EACH CLASS ENTRY IS \$5.00)</small>	

EARLY ENTRY EXHIBITOR FEE <small>INCLUDES 2 ADMISSIONS</small>	\$10.00
REGULAR ENTRY EXHIBITOR FEE <small>INCLUDES 2 ADMISSIONS</small>	\$15.00
TOTAL AMOUNT DUE	

The Cuyahoga County Fairboard and Cuyahoga County Agricultural Society assume no responsibility for livestock and/or articles exhibited, entered and/or shown upon the Cuyahoga County Fairgrounds. Exhibitor/Entrant specifically acknowledges his/her awareness that livestock and exhibition articles are placed upon and maintained upon the Cuyahoga County Fairgrounds by them at their sole risk. Further, entrant/exhibitor agrees to hold the Cuyahoga County Agricultural Society and the Cuyahoga County Fairboard harmless from any and all claims to or resulting from their respective livestock and/or exhibits from any cause whatsoever. The aforesaid indemnification shall include injuries to the person or property of third parties resulting from the aforesaid livestock and/or exhibition articles. The Cuyahoga County Fairboard assumes no responsibility for errors or omissions in the foregoing booklet.

MUST BE SIGNED BY PARENT/GUARDIAN IF UNDER 18

EXHIBITOR (PRINT) _____ FOR/BY _____ EXHIBITOR/ENTRANT _____ DATE _____

THIS FORM MAY BE DUPLICATED AS NEEDED!

Exhibitor # _____

Processed By: _____

Entered By: _____

Exhibitors Entry Form For
CHICKENS, DUCKS, GEESE & PIGEONS

Cuyahoga County Fair | PO Box 135 | Berea, OH 44017
 Phone: 440-243-0090 | Fax: 440-243-0344

FAIR DATES: AUGUST 11-16, 2026 | PHYSICAL ENTRIES ENTRIES CLOSE: AUGUST 7, 2026
ANIMAL ENTRIES CANNOT BE ENTERED ONLINE

Name _____ Cell _____
 Farm/Stable _____ Phone _____
 Address _____ E-Mail _____
 City _____ State _____ Zip _____

Section	Breed No.	Breed Name	Number of Entries				Total Per Breed	Entry Fee @ \$1.00
			Cock 1	Hen 2	Cockerel 3	Pullet 4		

NOTE: Please refer to the Premium Book for Exhibitor Entry Requirements. | Use reverse side of this form for additional entries.
 Unclaimed items will be donated to charity 7 days after the the close of the Fair.

ENTER ONLINE AT: WWW.CUYFAIR.COM • THIS FORM MY BE DUPLICATED AS NEEDED

EXHIBITOR FEE: **Early Entry : \$10.00** **Regular Entry : \$15.00** PLEASE INDICATE TOTAL NUMBER OF ENTRIES
(Includes 2 Admissions) (Includes 2 Admissions)

Make Check Payable to: Cuyahoga County Fair Or Provide CC Info Below

NUMBER	TYPE OF LIVESTOCK	AMOUNT
	Chickens	
	Ducks	
	Geese	
	Pigeons	
	Eggs	N/C
TOTAL AMOUNT DUE = ENTRY FEE + ANIMAL FEE		

Please Note: Your signature on this document indicates acceptance of all rules and regulations governing stall or pen assignments and exhibitor conduct as set forth by the Cuyahoga County Agricultural Society and the Director-At-Large of each livestock department.

Signature: _____

Date: _____

CREDIT CARD: VISA MC DISC AMEX | **CARD #** _____ **EXP.** _____ **CVV** _____

The Cuyahoga County Fairboard and Cuyahoga County Agricultural Society assume no responsibility for livestock and/or articles exhibited, entered and/or shown upon the Cuyahoga County Fairgrounds. Exhibitor/Entrant specifically acknowledges his/her awareness that livestock and exhibition articles are placed upon and maintained upon the Cuyahoga County Fairgrounds by them at their sole risk. Further, entrant/exhibitor agrees to hold the Cuyahoga County Agricultural Society and the Cuyahoga County Fairboard harmless from any and all claims to or resulting from their respective livestock and/or exhibits from any cause whatsoever. The aforesaid indemnification shall include injuries to the person or property of third parties resulting from the aforesaid livestock and/or exhibition articles. The Cuyahoga County Fairboard assumes no responsibility for errors or omissions in the foregoing booklet.

MUST BE SIGNED BY PARENT/GUARDIAN IF UNDER 18

EXHIBITOR (PRINT) _____ FOR/BY _____ EXHIBITOR/ENTRANT _____ DATE _____

Exhibitor # _____ Processed By: _____ Entered By: _____

Exhibitors Entry Form For
RABBITS & CAVIES
 Cuyahoga County Fair | PO Box 135 | Berea, OH 44017
 Phone: 440-243-0090 | Fax: 440-243-0344

FAIR DATES: AUGUST 11-16, 2026 | PHYSICAL ENTRIES ENTRIES CLOSE: AUGUST 7, 2026
ANIMAL ENTRIES CANNOT BE ENTERED ONLINE

Name _____ Cell _____

Address _____ E-Mail _____

City _____ State _____ Zip _____

LN. NO.	BREED NO.	CLASS NO. (SEX/AGE)	EAR TAG NO.	ENTRY FEE
1				
2				
3				
4				
5				
6				
7				
8				
9				
10				
11				
12				
13				

LN. NO.	BREED NO.	CLASS NO. (SEX/AGE)	EAR TAG NO.	ENTRY FEE
14				
15				
16				
17				
18				
19				
20				
21				
22				
23				
24				
25				
26				

Note: Please Refer to the Premium Book for Exhibitor Entry Requirements
 Make checks Payable to: Cuyahoga County Fair or Provide CC Info Below

CREDIT CARD: VISA MC DISC AMEX

CARD # _____

EXP. _____ CVV _____

MUST BE SIGNED BY PARENT/GUARDIAN IF UNDER 18

TOTAL NO. ANIMAL ENTRIES

TOTAL ANIMAL ENTRY FEES

	EARLY ENTRY EXHIBITOR FEE <small>(Includes 2 Admissions)</small>	\$10.00
	REGULAR ENTRY EXHIBITOR FEE <small>(Includes 2 Admissions)</small>	\$15.00
	TOTAL AMT. DUE	

EXHIBITOR (PRINT) _____ FOR/BY _____ EXHIBITOR/ENTRANT _____ DATE _____

Use Reverse Side of this Form for Additional Entries.

THIS FORM MAY BE DUPLICATED AS NEEDED!

RABBITS & CAVIES - CUYAHOGA COUNTY FAIR



LN. NO.	BREED NO.	CLASS NO. (SEX/AGE)	EAR TAG NO.	ENTRY FEE
27				
28				
29				
30				
31				
32				
33				
34				
35				
36				
37				
38				
39				
40				
41				
42				
43				
44				
45				
46				
47				
48				
49				
50				

LN. NO.	BREED NO.	CLASS NO. (SEX/AGE)	EAR TAG NO.	ENTRY FEE
51				
52				
53				
54				
55				
56				
57				
58				
59				
60				
61				
62				
63				
64				
65				
66				
67				
68				
69				
70				
71				
72				
73				
74				

Note: Complete if Separate Page.

Name _____ Phone _____ Cell _____

Address _____ City _____ State ____ Zip _____

THIS FORM MAY BE DUPLICATED AS NEEDED!

Need a large space for an indoor or outdoor event?

The Cuyahoga County Fairgrounds in Berea, Ohio is your spot! Whether you're planning a Trade Fair, Craft Show, or Festival, we've got you covered. Conveniently located near major highways, our 117-acre site offers 50,000 sq. ft. of indoor exhibit space and parking for 7,500 vehicles. And hey, if you're an RV enthusiast, we've got hookups for electric, water, and sewer. Just give us a shout during office hours (MWF 10-3) for all the juicy details or go to cuyfair.com/fairgrounds/building-rental!



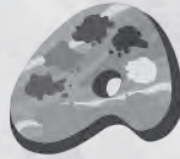
440-243-0090



Cuyahoga County Agricultural Society | PO Box 135 | 164 Eastland Road | Berea, OH 44017

Unaccompanied Minor Protocol

- To be admitted to the Cuyahoga County Fair after 6pm, all youth under the age of 18 years are required to be accompanied by an adult, sober and competent person aged 21 or older who will supervise the youth while at the Cuyahoga County Fair (such as a parent, legal guardian, relative or other adult). After 6pm unattended youths without a chaperone will be denied entry and asked to leave or return with a chaperone.
- One chaperone may accompany no more than six (6) guests under the age of 18 years of age, per day.
- This policy applied regardless of entry method, such as a pre-purchased ticket or re-entry with a hand stamp from earlier in the day.
- Proof of age is required. Any fairgoer, including those over 18 years, may be required to show a valid governmental identification for proof of age.
- The Cuyahoga County Fair and the Cuyahoga County Sheriff's Department reserve the right to remove any fairgoer, or any age, violating any law, rule, or policy.
- This policy will be enforced daily.
- Exceptions or challenges to this policy will be satisfied at the discretion of the Cuyahoga County Fair Board President.
- Those youth under the age of 18 years with valid fair, vendor, or carnival employee or volunteer credentials will be permitted to enter the fairgrounds without a supervising party.



ARTIST FOR A DAY

PAINT - YOUR - OWN POTTERY



**POTTERY PAINTING
CLAY & STONWARE
CANVAS PAINTING
CLASSES | STUDIO EVENTS
PARTIES & MORE!**

WALK-INS WELCOME!

**CONGRATULATIONS
CUYAHOGA COUNTY FAIR!!**



28649 LORAIN ROAD • NORTH OLMSTED
artistforaday.com

BUCKEYE STATE SANCTIONED

PEDAL TRACTOR PULL



AT THE

CUYAHOGA COUNTY FAIR

TUESDAY, AUG 11, 2026

AGES 4-11: FREE

**AGES 12 & OVER:
\$10.00**

**REGISTRATION FROM 1PM TO 2PM
EVENT BEGINS AT 2PM**



**No Need To Bring Your
Own Pedal Tractor.
One will be provided by
the event.**

Sponsored By:



CUYAHOGA COUNTY

STABLES LLC



**Cuyahoga County
Agricultural Society**
P.O. Box 135
Berea, Ohio 44017

